



## **Observer Help Manual**

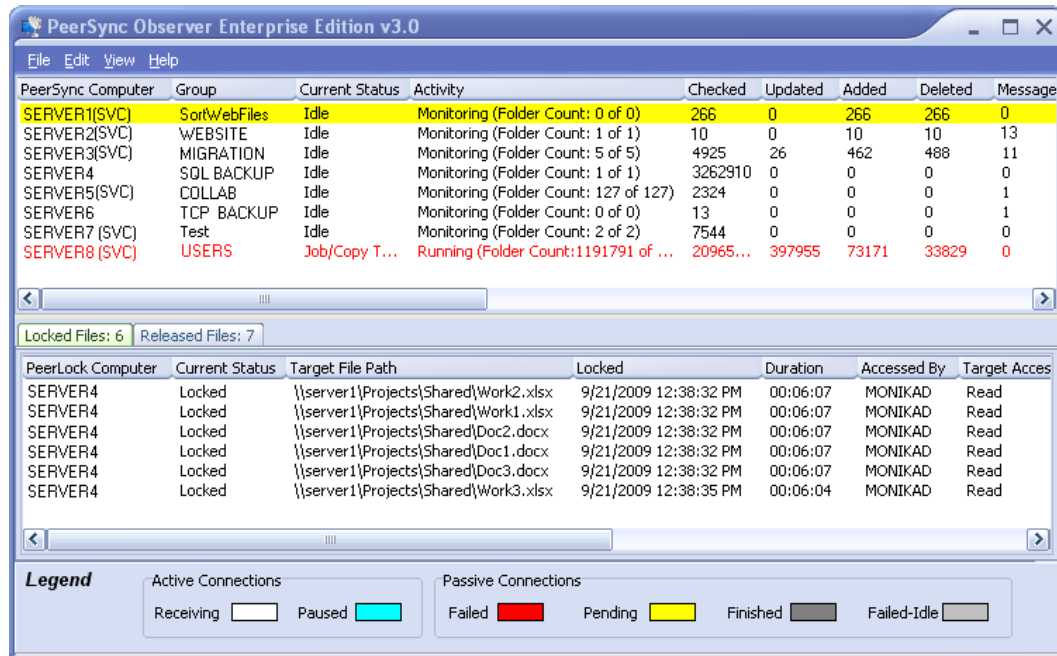
1993-2010 Peer Software Inc. All Rights Reserved.

Updated Monday, January 25, 2010

# Table of Contents

<b>PSObserver Help</b>	<b>1</b>
<b>Getting Started</b> .....	<b>1</b>
<b>Menu</b> .....	<b>4</b>
File Menu .....	4
Edit Menu .....	5
View Menu .....	5
Help Menu .....	8
<b>PeerSync Activity Panel</b> .....	<b>9</b>
PeerSync Activity Panel .....	9
PeerSync Activity Pop-Up Menu .....	13
<b>PeerLock Activity Panel</b> .....	<b>16</b>
Locked List .....	16
Released List .....	18
Lock/Released List Popup Menu .....	21
<b>Admin Events Panel</b> .....	<b>22</b>
Admin Events Panel .....	22
Admin Events Pop-Up Menu .....	23
<b>Settings Window</b> .....	<b>24</b>
General Tab .....	24
Reporting Tab .....	26
Email Alerts .....	28
Color Key Tab .....	30
Domain List Tab .....	31
<b>Profile Operations</b> .....	<b>32</b>
<b>Color Legend Panel</b> .....	<b>37</b>
<b>Profile Editor</b> .....	<b>38</b>
<b>Status Display</b> .....	<b>39</b>
<b>License</b> .....	<b>41</b>
<b>Index</b>	<b>45</b>

## PSObserver Help



The manufacturer of PSObserver™ makes no warranties, implied or otherwise, for use of this product. User assumes all responsibility for any data loss or damage.

Copyright © 1993-2010 Peer Software Inc. All Rights Reserved [Privacy Policy](#)

PSObserver™, PeerSync™, and PeerLock™ are registered trademarks of Peer Software, Inc.

Embedded Open File Manager is a registered trademark of EVault.

Reproduction in whole or in part without permission is strictly prohibited.

The PSObserver Help Manual was built on Monday, January 25, 2010

## Getting Started

Welcome to the PeerSync Observer Enterprise v3.0 software. This software allows for the ability to monitor PeerSync™ and PeerLock™ activity across the LAN for the centralized viewing of all PeerSync™ and PeerLock™ activity on the network. The PSObserver is a receptor application that receives specific information from running PeerSync™ and PeerLock™ applications on the network. As a receptor, it displays changes from the PeerSync™ and PeerLock™ applications based solely on their ability to connect and transmit that information successfully to the PSObserver.

### New Enhancements

The [PeerSync Administrator Enterprise Package](#) introduces new capabilities that simplify deploying, configuring, and managing multiple PeerSync instances throughout the network. With just a few clicks, administrators can configure, update, distribute and monitor all running instances of PeerSync. Email Alerts may be enabled for immediate status notifications.

### Prerequisites

1. PeerSync Observer Enterprise v3.0 should be installed on any Windows computer on the network with access to all other computers running PeerSync™ and/or PeerLock™. From the computer running Observer you need to be able to navigate and access the machines running PeerSync™ and/or PeerLock™ through Network Neighborhood. A trust must exist between different domains within the same network for the PSObserver to be able to receive status across domains. Your firewall also needs to allow for broadcast traffic between the Observer and PeerSync and PeerLock.
2. If PSObserver resides on a separate subnet than PeerSync,™ then you will need to add the /GO:MachineName or the /GO:DomainName command line argument where MachineName and DomainName represent the name and the domain of the machine on which the PSObserver is running.
3. Alternatively, if the PSObserver is having problems receiving status information from PeerSyncs™ and PeerLocks™ running on the domain or across the VPN, open the [Domain List](#) dialog, right-click and select "Add New Item." Enter the name of the machine where PeerSync™ and PeerLock™ reside.
4. In order to be able to utilize all functions of the PeerSync Observer Enterprise product we recommend using PeerSync™ versions 7.3.2 or higher and PeerLock™ versions 2.0 or higher. However, you may still be able to receive limited status display information from earlier versions of PeerSync™.

### Limitations/Comments

1. PeerSync™ and the PSObserver utilize Microsoft mail slots for communication purposes. This method ensures that all communications will be secured by the built in security of your Microsoft Windows network environment and no additional security methods need to be implemented. In other words, if the running applications have the privileges to access each others information, then the mail slots will allow interactive communication. Otherwise communication will be denied.
2. The PSObserver and PeerSync™ both use the same mail slot to send and receive status information. Therefore running both products on the same computer will limit the status display within PeerSync™ and activity reporting in the PSObserver. A solution to this would be to disable status display in the PeerSync™ Profiler by going to the Options/Commands window, Display Options, and un-checking Display status in Profiler. Make sure you save and restart PeerSync™ and the PSObserver.
3. If the computer on which the PSObserver is running cannot navigate to or access the machines on which PeerSync™ and/or PeerLock™ are running through Network Neighborhood, then communication cannot take place between the applications.
4. If a connection is lost, the implication is that PeerSync™ and PeerLock™ are not running, however, that may not be the case. PeerSync™ and PeerLock™ may be running fine but the network path between the applications has been compromised.
5. Only a single copy of the PSObserver can run on a computer.

6. For PeerSync™ versions older than 7.3.2, please enable the "Send status information to PSObserver Utility" option from the Options/Commands --> Display Options window.

### PSObserver Installations and Registration

PSObserver is shipped (downloaded) in a full installation program. To run, simply double click on the executable file from the explorer (or choose Start Menu Run option and the select the application).

Evaluation copies do not require user information and passwords. Registration copies require you to enter a Registration Key into the Register Software Screen. When purchased, Peer Software will send the Authorization Key required to unlock the PSObserver evaluation. This key is to be entered during the installation of the software.

If this is an unregistered or evaluation copy of PSObserver, you can register it with Peer Software, Inc. as a fully licensed copy by providing credit card information via phone or secure Internet registration, or by sending a check or money order to the address below (see included "readme.txt" file for pricing information).

Register online via secure internet credit card registration at <http://www.peersoftware.com>

Register by phone via credit card by calling:  
631.979.1770 between the hours of 9:00 AM and 5:00 PM EST

Register by mail, send check or money order to:  
Peer Software, Inc.  
4155 Veterans Highway, Suite 12  
Ronkonkoma, NY 11779-6063

### Upgrade Information

As new updates/changes become available, updated versions of the software will be posted on our web page <http://www.peersoftware.com>. Check this page periodically to download the latest executables. Your Authorization Key will continue to work with updated versions unless a major release is issued, or PSObserver is installed in a different folder than the previously installed/authorized version. Please refer to the WhatsNew and/or ReadMe files shipped with the PSObserver installation for the latest upgrade information.

To upgrade, double-click on the installation file (obs20.exe) in the Explorer window, or choose "Run" from the Start Menu and then select the application. If you are upgrading the current version of PSObserver (3.0.0 to 3.0.1) simply install the application over your existing PSObserver and the previous version will be backed up in a sub-folder called 'BACKUP' (if the option to keep a backup is selected during the installation).

If you are evaluating a new version of Observer 3.0 and you already have an existing copy of Observer 1.0 or older, please select a new directory during the installation.

### Product Support

All support of PSObserver will be handled on our website (<http://www.peersoftware.com>) support page for this product.

## Terms And Conditions

Read [License](#) agreement before using this program.

Suggestions, Comments, or Requests for Support:

Peer Software, Inc.  
 4155 Veterans Highway, Suite 12  
 Ronkonkoma, NY 11779-6063  
 Phone: 631.979.1770  
 FAX: 631.979.1870  
 Email: [support@peersoftware.com](mailto:support@peersoftware.com)

The manufacturer of PSObserver makes no warranties, implied or otherwise, for use of this product. User assumes all responsibility for any data loss or damage.

Copyright © 1993-2010 Peer Software Inc. All Rights Reserved [Privacy Policy](#)

PSObserver, PeerSync, and PeerLock are registered trademarks of Peer Software, Inc.

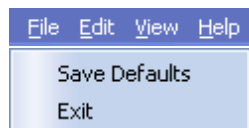
Embedded Open File Manager is a registered trademark of St. Bernard Software.

Reproduction in whole or in part without permission is strictly prohibited.

The PSObserver Help Manual was built on Monday, January 25, 2010

## Menu

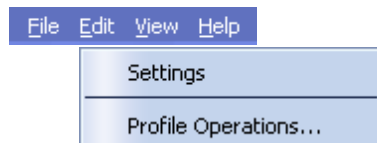
### File Menu



File Menu	
Save Defaults	This option gets displayed in the File menu. When selected, the Observer will store out all interface settings, including positions of windows, into the PSOBSDEF.CFG file. By default interface changes will only be saved when the application closes.
Exit	Terminates the PSObserver. If the "Save Content on Close" option is enabled for <a href="#">Reporting</a> the PSObserver will prompt you for a report path upon closing the application. This setting is enabled by default.  * If the <a href="#">Terminate Remote Link on Close Option</a> is enabled, each connected PeerSync™ and PeerLock™ will be notified to stop reporting information across the network when the PSObserver is terminated reducing unnecessary network

	<p>traffic. This change does not affect communication to other PSObservers running on the network.</p> <p>* Note: Option available for PeerSync™ versions 7.3.2 or higher.</p>
--	--

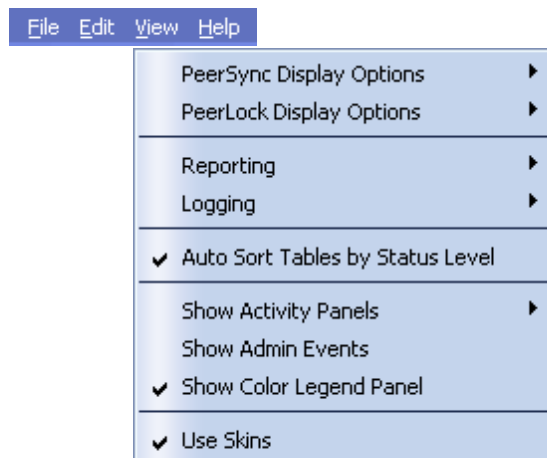
## Edit Menu



Edit Menu	
Settings	Opens the <a href="#">Settings</a> dialog box/window for additional PSObserver configuration such as <a href="#">color_key</a> settings, listing of available <a href="#">domains</a> , <a href="#">reporting</a> , <a href="#">activity_monitor</a> options, and other <a href="#">miscellaneous</a> settings.
Profile Operations... *	This menu option is only available with the <a href="#">PeerSync Administrator Enterprise Package</a> . Selecting this option will open the <a href="#">Profile Operations</a> dialog which supports functionalities such as Stopping, Starting, Pausing PeerSync™ services and editing/submitted Profile changes.

\* Note: This menu option is only available with the [PeerSync Administrator Enterprise Package](#).

## View Menu



View Menu	
PeerSync Display Options	Refresh PeerSync Display F5 Clears and repopulates all active connections from the <a href="#">PeerSync Activity Table</a> .
	Clear/Refresh Entries...

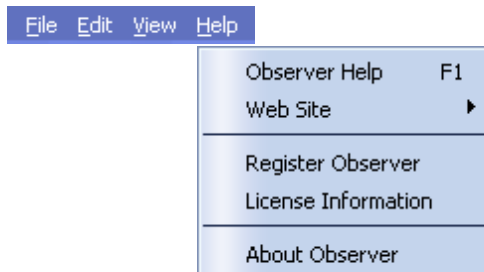
	<p>Clears or refreshes the following <a href="#">PeerSync_Activity_Table</a> entries:</p> <table border="1" data-bbox="657 331 1388 577"> <tr> <td data-bbox="657 331 876 399">Active</td> <td data-bbox="876 331 1388 399">Refreshes all connections that are active (receiving or paused).</td> </tr> <tr> <td data-bbox="657 399 876 487">Passive</td> <td data-bbox="876 399 1388 487">Refreshes all passive connections. Completed, terminated, or failed Profiles will be cleared from the list.</td> </tr> <tr> <td data-bbox="657 487 876 577">All</td> <td data-bbox="876 487 1388 577">Refreshes the <a href="#">PeerSync_Activity_Table</a> to display new running Profiles and clearing completed, failed, or terminated sessions.</td> </tr> </table> <p>Note: These are global settings which apply to all <a href="#">tabs/groups</a> within the <a href="#">PeerSync Activity Table</a>.</p> <p><b>Re-Send Connection Requests</b> Broadcasts message to all PeerSync™ Profiles running within the designated domain to begin transmitting status information to the PSObserver.</p> <p><b>Use Tab Group</b> Disabled by default, this option creates Tabs for all the items in the <a href="#">PeerSync_Activity_Table</a> based on their Profile names. All Profiles running with the same name will be grouped under the same Tab. The name of each Tab becomes the name of the Profiles running in that group followed by two values (x/y). The first (x) represents the number of <a href="#">Failed</a> or Not Responding Profiles in the group and the second (y) represents the total number of Profiles in the group. By default the Tabs will be displayed on top of the <a href="#">PeerSyncActivity_Table</a> in multiple rows/lines.</p>	Active	Refreshes all connections that are active (receiving or paused).	Passive	Refreshes all passive connections. Completed, terminated, or failed Profiles will be cleared from the list.	All	Refreshes the <a href="#">PeerSync_Activity_Table</a> to display new running Profiles and clearing completed, failed, or terminated sessions.
Active	Refreshes all connections that are active (receiving or paused).						
Passive	Refreshes all passive connections. Completed, terminated, or failed Profiles will be cleared from the list.						
All	Refreshes the <a href="#">PeerSync_Activity_Table</a> to display new running Profiles and clearing completed, failed, or terminated sessions.						
PeerLock Display Options	<p><b>Refresh PeerLock Display F5</b> Clears and repopulates all lock entries from the <a href="#">Locked List</a>.</p> <p><b>Re-Send Connection Requests</b> Broadcasts message to all PeerLocks™ running within the designated domain to begin transmitting status information to the PSObserver.</p>						
Reporting	<p><b>View</b> Opens the latest PSObserver.TXT file that exists.</p> <p>Note: By default, the PSObserver report files get stored in the same directory where the PSObserver application file is located. To modify the default location, go to the <a href="#">Reporting</a> dialog accessible from the <a href="#">Edit</a> -&gt; Settings menu.</p> <p><b>Delete</b> Clears the content of the latest PSObserver.TXT file created.</p> <p>Note: By default, the PSObserver report files get stored in the same directory where the PSObserver application file is located. To modify the default location, go to the <a href="#">Reporting</a> dialog accessible from the <a href="#">Edit</a> -&gt; Settings menu.</p> <p><b>Save</b> Allows you to specify the name and location for your report file. The report file can also be saved in an MS Excel format by</p>						

	<p>changing the extension from .txt to .xls.</p> <p>Note: By default, the PSObserver report files get stored in the same directory where the PSObserver application file is located. To modify the default location, go to the <a href="#">Reporting</a> dialog accessible from the <a href="#">Edit</a> -&gt; Settings menu.</p> <p><b>Append</b>          Appends the content of the current <a href="#">PeerSync_Activity_Table</a> to the latest report file.</p> <p>Note: By default, the PSObserver report files get stored in the same directory where the PSObserver application file is located. To modify the default location, go to the <a href="#">Reporting</a> dialog accessible from the <a href="#">Edit</a> -&gt; Settings menu.</p> <p><b>Create/Overwrite</b>          Creates a new report file with the latest Network Activity information in the directory specified. If the file already exists, the application will give you the option to either overwrite the file or append the current Network Activity information to it.</p> <p>Note: By default, the PSObserver report files get stored in the same directory where the PSObserver application file is located. To modify the default location, go to the <a href="#">Reporting</a> dialog accessible from the <a href="#">Edit</a> -&gt; Settings menu.</p> <p><b>Save Content on Close</b>          By default this option is enabled. At the time you exit/close the application the PSObserver will store out the latest Network Activity information into the current report file. If no report file exists, you will then be able to create one.</p> <p>Note: By default, the PSObserver report files get stored in the same directory where the PSObserver application file is located. To modify the default location, go to the <a href="#">Reporting</a> dialog accessible from the <a href="#">Edit</a> -&gt; Settings menu.</p>
Logging	<p><b>View</b>          The log file maintains a running summary of activities picked up by the PSObserver. This option opens the latest PSObserver.LOG file that exists.</p> <p>Note: By default, the PSObserver log files get stored in the same directory where the PSObserver application file is located. To modify the default location, go to the <a href="#">Reporting</a> dialog accessible from the <a href="#">Edit</a> -&gt; Settings menu.</p> <p><b>Delete</b>          Clears the content of the PSObserver.LOG file.</p> <p>Note: By default, the PSObserver log files get stored in the same directory where the PSObserver application file is located. To modify the default location, go to the <a href="#">Reporting</a> dialog accessible from the <a href="#">Edit</a> -&gt; Settings menu.</p> <p><b>Enable Logging</b>          By default this option is enabled. When this setting is enabled the PSObserver will store Profile activities in the PSObserver.LOG file.</p> <p>Note: By default, the PSObserver log files get stored in the same directory where the PSObserver application file is located. To modify the default location, go to the <a href="#">Reporting</a> dialog accessible from the <a href="#">Edit</a> -&gt; Settings menu.</p>

Auto Sort Table by Status Level	Enabled by default, this setting will sort all PeerSync™ and PeerLock™ table entries by the <a href="#">Status_Level</a> column. This setting applies to both <a href="#">PeerSync</a> and <a href="#">PeerLock</a> Activity Tables.
Show Admin Events *	This menu option is only available with the <a href="#">PeerSync Administrator Enterprise Package</a> . When selected it will display the <a href="#">Admin_Events_Panel</a> at the bottom of the PSObserver interface. By default this table will show all errors that result due to administrative actions such as failing to copy a remote Profile locally for purposes of editing. Right-click on this table and uncheck the <a href="#">Show Failed Events Only</a> option to display all messaging transactions between PeerSync™, PeerLock™, and the PSObserver.
Show Activity Panels	Show PeerSync Shows or Hides the <a href="#">PeerSync_Activity_Panel</a> . It can only be hidden when the <a href="#">PeerLock_Activity_Panel</a> is visible. One of the two panels must be shown.
	Show PeerLock Shows or Hides the <a href="#">PeerLock_Activity_Panel</a> . It can only be hidden when the <a href="#">PeerSync_Activity_Panel</a> is visible. One of the two panels must be shown.
	Show Both (Default) Shows or Hides both the <a href="#">PeerSync_Activity_Panel</a> and the <a href="#">PeerLock_Activity_Panel</a> .
Show Color Legend Panel	Displays the <a href="#">Color_Legend_Panel</a> below the <a href="#">PeerSync</a> or <a href="#">PeerLock</a> Activity Tables. This setting is enabled by default.
Use Skins	Enabled by default, this setting enhances the applications visual features such as buttons, tabs, and color. We do not recommend using this option when using display setting of 256 colors.

\* Note: This menu option is only available with the [PeerSync Administrator Enterprise Package](#).

## Help Menu



Help Menu	
Observer Help F1	Opens the default Help Content. This requires that the Help

	Manual is located in the Observer's installation directory.
Web Site	Our Home Page Link to the PSObserver home page at <a href="http://www.peersoftware.com">www.peersoftware.com</a> which provides quick and easy access to our product information,
	Online Support Provides access to product Knowledge Base pages, Online Forum, Support team contact, and product updates.
	Latest News Link to the News page for a listing of press releases, white papers ,and success stories referencing Peer Software products.
	Contact Us Companies address, phone number, and e-mail. You may also complete and submit a request through the form available on this page.
Register Observer	Opens the Registration window. A product Key is issued at the time of purchase and is required in order to fully register the product. Otherwise the PSObserver will run for a trial period before it becomes non-functional.
License Information	Opens the Product Editions and Licensing dialog. This window shows the current packages, options, and functionalities the PSObserver is registered to use.
About Observer	The About window displays the product details such as the version number, build date, registration information, and company contact details.

## PeerSync Activity Panel

### PeerSync Activity Panel

PeerSync Computer	Group	Current Status	Activity	Checked	Updated	Added	Deleted	Message
SERVER1(SVC)	SortWebFiles	Idle	Monitoring (Folder Count: 0 of 0)	266	0	266	266	0
SERVER2(SVC)	WEBSITE	Idle	Monitoring (Folder Count: 1 of 1)	10	0	10	10	13
SERVER3(SVC)	MIGRATION	Idle	Monitoring (Folder Count: 5 of 5)	4925	26	462	488	11
SERVER4	SQL BACKUP	Idle	Monitoring (Folder Count: 1 of 1)	3262910	0	0	0	0
SERVER5(SVC)	COLLAB	Idle	Monitoring (Folder Count: 127 of 127)	2324	0	0	0	1
SERVER6	TCP BACKUP	Idle	Monitoring (Folder Count: 0 of 0)	13	0	0	0	1
SERVER7 (SVC)	Test	Idle	Monitoring (Folder Count: 2 of 2)	7544	0	0	0	0
SERVER8 (SVC)	USERS	Job/Copy T...	Running (Folder Count:1191791 of ...	20965...	397955	73171	33829	0

#### PeerSync Activity Table Columns

The Activity Table displays PeerSync™ Profile activities in tabular format. This is the primary visual feedback display for all connected and running PeerSyncs™ on your network. Through this display you can expand detailed information about one or more connections and have some limited control over the connected and running

PeerSyncs™ around your network. Below is a description of each column represented in the PeerSync Activity Table.											
PeerSync Computer	Lists the name of the computer on which a specific Profile is running. When (SVC) is displayed at the end of the computer name, it signifies that the Profile is running as a Service. When (NP) is displayed at the end of the computer name, it signifies that the Profile is running in a Non Persistent mode. This means that PeerSync™ will terminate once it completes its Job(s). This notation tells you that PeerSync™ terminated expectedly.										
Group	Displays the Name or Group Name of the Profile (.snc) currently running on a computer. By default, the PSObserver uses the name of the running Profile. You can specify a Group Name for your Profile by adding /GOC:group to the list of command line arguments in PeerSync™ (see the /GO option in the PeerSync™ Help Manual).										
Current Status	Shows the status of each running Profile. <table border="1"> <tr> <td>Not Connected</td> <td>Displayed when PeerSync™ is running but not transmitting status information to the PSObserver. In PeerSync™ versions older than 7.3.2 this has to be enabled manually from the PeerSync™ Profiler.</td> </tr> <tr> <td>Processing Selected Jobs</td> <td>Generally shown for Non Persistent (NP) Profiles.</td> </tr> <tr> <td>Job/ Copy Threads</td> <td>Shown for persistent Jobs running multiple threads.</td> </tr> <tr> <td>Daily Timer w/ RT</td> <td>Shown for persistent Jobs running in a schedule and real-time mode.</td> </tr> <tr> <td>Finished</td> <td>Specific Profile terminated after successfully completing its Job(s).</td> </tr> </table>	Not Connected	Displayed when PeerSync™ is running but not transmitting status information to the PSObserver. In PeerSync™ versions older than 7.3.2 this has to be enabled manually from the PeerSync™ Profiler.	Processing Selected Jobs	Generally shown for Non Persistent (NP) Profiles.	Job/ Copy Threads	Shown for persistent Jobs running multiple threads.	Daily Timer w/ RT	Shown for persistent Jobs running in a schedule and real-time mode.	Finished	Specific Profile terminated after successfully completing its Job(s).
Not Connected	Displayed when PeerSync™ is running but not transmitting status information to the PSObserver. In PeerSync™ versions older than 7.3.2 this has to be enabled manually from the PeerSync™ Profiler.										
Processing Selected Jobs	Generally shown for Non Persistent (NP) Profiles.										
Job/ Copy Threads	Shown for persistent Jobs running multiple threads.										
Daily Timer w/ RT	Shown for persistent Jobs running in a schedule and real-time mode.										
Finished	Specific Profile terminated after successfully completing its Job(s).										
Activity	Shows the activity of each Profile running. <table border="1"> <tr> <td>Monitoring (Persistent)</td> <td>Displayed for persistent Profiles such as Profiles running in real-time, on schedule, interval, or as a Service.</td> </tr> <tr> <td>Running</td> <td>Usually shown for Non Persistent (NP) Profiles.</td> </tr> <tr> <td>Closed by Operator or System Shutdown</td> <td>Displayed once all Jobs in a Non Persistent Profile completed and the application was closed or when a Service was manually stoped.</td> </tr> <tr> <td>Closed Normally</td> <td>Displayed when all Jobs in a Non Persistent Profile completed.</td> </tr> </table>	Monitoring (Persistent)	Displayed for persistent Profiles such as Profiles running in real-time, on schedule, interval, or as a Service.	Running	Usually shown for Non Persistent (NP) Profiles.	Closed by Operator or System Shutdown	Displayed once all Jobs in a Non Persistent Profile completed and the application was closed or when a Service was manually stoped.	Closed Normally	Displayed when all Jobs in a Non Persistent Profile completed.		
Monitoring (Persistent)	Displayed for persistent Profiles such as Profiles running in real-time, on schedule, interval, or as a Service.										
Running	Usually shown for Non Persistent (NP) Profiles.										
Closed by Operator or System Shutdown	Displayed once all Jobs in a Non Persistent Profile completed and the application was closed or when a Service was manually stoped.										
Closed Normally	Displayed when all Jobs in a Non Persistent Profile completed.										
Checked	This indicator displays the total number of source files/folders that have been validated for all Profile Jobs.										
Updated	Indicates the number of Target Files that were updated during synchronization of all Profile Jobs.										
Added	Indicates the number of new files added to the Target Folders										

	during the synchronization of all Profile Jobs.
Deleted	Indicates the number of files deleted (or moved) during synchronization of all Profile Jobs.
Messages	Indicates the number of error messages generated during Profile processing.
Time	Indicates the amount of time that has elapsed since the current Profile was launched.
Total Bytes Copied	Indicates the total number of bytes successfully transmitted to the Target Folder(s) during the synchronization of all Profile Jobs.
User	Indicates the user name under which the PeerSync™ Service or application is running.
Version	Represents the version of PeerSync™ running under this Profile. PeerSync™ versions older than 7.3.2 will be displayed as UNKNOWN.
Send Frequency	Frequency in seconds by which PeerSync™ transmits status information to the PSObserver. By default the Send Frequency is set to 3 seconds in PeerSync™. To modify the Send Frequency for a specific PeerSync™ Profile, right-click on the entry from the <a href="#">PeerSync Activity Panel</a> , select "Set Transmit Frequency" from the <a href="#">PeerSync Activity Pop-Up</a> menu and specify the desired frequency. Alternatively, you may add / GOF: x to the PeerSync™ list of command line arguments, where x represents the second frequency interval.
Domain	<p>The name of the Domain on which the Profile is running. If PeerSync™ and the PSObserver are running on two separate domains on the same network a trust must exist between the domains in order for the applications to be able to see and communicate with each other.</p> <p>Note: The Domain name will only be displayed for PeerSync™ versions 7.3.2 or higher.</p>
Cycles	<p>By default, this column is hidden and is only viewable in the <a href="#">PeerSync Activity Panel</a>. To enable, right-click on the <a href="#">PeerSync Activity Panel</a> and choose "Selected Columns..."</p> <p>The Cycle interval tells the Observer when to check the activity and status of the items listed in the <a href="#">PeerSync</a> and <a href="#">PeerLock</a> Activity Panels. After each Cycle the Observer will update the color display of the items accordingly.</p> <p>The Cycle is determined internally by the number of seconds before displaying the "Pending" and "Failed" colors. These options can be set in the <a href="#">General Settings</a> window. The Observer determines the greatest common denominator between these two values as the Cycle. If the common denominator equals the "Pending" value, the next common</p>

	<p>denominator of the "<a href="#">Pending</a>" and "<a href="#">Failed</a>" settings is used.</p> <p>Note: The Cycle value is used by the PSObserver to check the status of both <a href="#">PeerSync</a> and <a href="#">PeerLock</a> activities.</p>
Status Level	<p>Column that represents the status level of each PeerSync™ entry (-1 to 5).</p> <p>0 = Finished, 1 = Receiving, 2 = Paused, 3 = Pending, 4 = Failed-Idle, 5 = Failed, -1 = Disabled/Unknown</p>
Profile Date Modified	<p>Column that represents the date and time when the current Profile was updated.</p>
Pending Scans	<p>Column that represents the number of scans that have not been able to run because of lack of Job Threads.</p>
Pending Events	<p>Column that represents the number of pending events that have been queue but are still waiting to be processed.</p>
Pending Retries	<p>Column that represents the number of files waiting in the list to be retried.</p>
Pending Managed Files	<p>Column that represents the number of files that are waiting to be processed using the Embedded Open File Manager (EOFM) or VSS based on the Managed Files interval.</p>
Failed Scans	<p>Column that represents the number of scans that have interrupted or were not able to run because of lack of Job Threads or connectivity issues and the Retry failed connection every x minutes option is disabled. The text color will change to red for items in the PeerSync Activity Panel when the Failed Scans counter is greater than zero. See the Reprocess Failed Scans option.</p>
Failed Files	<p>Column that represents the number of files that have failed to be replicated/synchronized possibly due to Retries being turned off or exceeded. The text color will change to red for items in the PeerSync Activity Panel when the Failed Files counter is greater than zero. See the Reprocess Failed Files option.</p>
Job Count	<p>Column represents the total number of Jobs running in the current Profile.</p>
Detected Events	<p>Column that represents the number of events that have been detected but have not been analyzed and entered in a queue yet.</p>

**Notes:**

1. If the "Auto Sort Tables by Status Level" option is selected from the [View](#) menu, non-responding Profiles will be shown at the top of the [Activity Table](#) while inactive Profiles are pushed to the bottom. All other activities will be shown in the order they are received. The color of each row represents the connection status and can be set in the [Settings](#) window accessible from the [Edit](#) menu or by simply clicking on the [Color Legend Panel](#) at the bottom of the PSObserver.
2. Turning off the "Auto Sort Tables by Status Level" option from the [View](#) menu will allow you to sort the table by

any column simply by clicking on the column header.

- The columns displayed on this panel can be shown/ hidden by choosing "Select Columns..." from the [PeerSync Activity Pop-Up Menu](#).
- You can re-arrange the table columns by clicking and dragging the desired column to another location. The size and positions of the columns will be retained in the PSOBSDEF.CFG configuration file.
- By double clicking on a selected row you will open the [Status Display](#) of the running PeerSync™ Profile. See [Connect to Status Display](#) below for more information.
- To refresh all active PeerSync™ entries hit F5 on the keyboard once the [PeerSync Activity Panel](#) is in focus.

## PeerSync Activity Pop-Up Menu



Activity Pop-Up Menu Items	
By right clicking on the <a href="#">PeerSync Activity Table</a> , you will display the <a href="#">PeerSync Activity Pop-Up Menu</a> .	
Select Columns...	Displays a dialog from which you can choose to show/hide specific <a href="#">PeerSync Activity Panel</a> columns. You can hide/show the entire <a href="#">PeerSync Activity Panel</a> by disabling /enabling the "Display PeerSync Activity" item within the <a href="#">View</a> menu. At least one column must be shown in the <a href="#">PeerSync Activity Panel</a> .
Clear/Refresh Entries In Table...	Selected Available only if an entry is selected from the <a href="#">PeerSync Activity Table</a> . This setting refreshes the selected row. If all the Jobs in a Non Persistent (NP) Profile are completed or the selected Profile was terminated or 'Failed', the table entry for that Profile will be cleared.
	Active Refreshes all connections that are active (receiving or paused) within this table or current tab/group (if the <a href="#">Use_Tab_Group</a> option is enabled).

	<p>Passive Refreshes all passive connections. Completed, terminated, or failed Profiles will be cleared from the <a href="#">Activity Table</a> or current tab/group (if the <a href="#">Use Tab Group</a> option is enabled).</p> <p>All Refreshes the <a href="#">PeerSync Activity Table</a> to display new Profiles running and clearing completed, failed, or terminated sessions.</p>
Re-Send Connection Request	Broadcasts message to all Profiles running within the designated domain to begin transmitting status information to the PSObserver. This menu item is not available for PeerSync Profiles that are running TCP Jobs.
Connect to Status Display	Opens the <a href="#">Status Display</a> window of the selected running PeerSync™ Profile. You may open a maximum of four (4) <a href="#">Status Display</a> windows. Each one will retain its size and position, although subsequent launches of a given Profile will not necessarily utilize the same window. To open another Profile, simply close one of the open <a href="#">Status Displays</a> and the new window will open in its place. Only a single instance of the <a href="#">Status Display</a> window can be opened per Profile. Furthermore, each window can be specified to Stay on Top of the PSObserver application from the Options menu in each individual window. This menu item is not available for PeerSync Profiles that are running TCP Jobs.
Enable Activity Reporting *	Selecting this option tells PeerSync™ and PeerLock™ residing on the computer of this selection to begin sending status information to the PSObserver. This option is only available on the right-click of an item on the <a href="#">PeerSync Activity Panel</a> , however, it also affects/apply's to PeerLock™ entries residing on the same computer as the PeerSync™ item that received the "Enable" command. This menu item is not available for PeerSync Profiles that are running TCP Jobs.
Disable Activity Reporting *	<p>This option tells PeerSync™ and PeerLock™ residing on the computer of this selection to stop sending status information to the PSObserver. This option is only available on the right-click of an item on the <a href="#">PeerSync Activity Panel</a>, however it also affects/apply's to PeerLock™ entries residing on the same computer as the PeerSync item that received the "Disable" command. If the <a href="#">Always Enable Activity Reporting</a> setting is enabled, selecting this option will disable it so that the <a href="#">Enable Activity Reporting</a> becomes available.</p> <p>When activity has been "Disabled" for PeerSync™ and PeerLock™, the PeerSync™ and PeerLock™ entries affected would change their status to 'Disabled' followed by the reason why the PSObserver stopped receiving the activity. Only minimal information would be retained in the Activity Panels for the 'Disabled' connections. This menu item is not available for PeerSync Profiles that are running TCP Jobs.</p>

Service Operations **	<p><b>Start PeerSync On</b> This option is available only when using the <a href="#">PeerSync Administrator Enterprise Package</a> and for items for which the service has been installed and is stopped. Clicking on this option will start the PeerSync Service for the selected item (assumes the service has been installed and properly configured on the target computer).</p> <p><b>Stop PeerSync On</b> This option is available only when using the <a href="#">PeerSync Administrator Enterprise Package</a> and if the selected item is running as a service. By selecting this option the Observer will terminate the PeerSync™ Service running on the selected device.</p> <p><b>Pause PeerSync On</b> This option is available only when using the <a href="#">PeerSync Administrator Enterprise Package</a> and if the selected item is running as a service. By selecting this option the Observer will pause the PeerSync™ Service running on the selected device.</p> <p><b>Resume PeerSync On</b> This option is available only when using the <a href="#">PeerSync Administrator Enterprise Package</a> and for items for which the service is paused. By selecting this option the Observer will resume the paused PeerSync™ Service running on the selected device.</p> <p><b>Select Computer to Start PeerSync Service...</b> This option is available only when using the <a href="#">PeerSync Administrator Enterprise Package</a>. When selected, a Remote Service Start dialog will be displayed where you may select/enter the name of the computer on which to start the PeerSync™ Service (assumes the service has been installed and properly configured on the target computer).</p>
Profile Operations... *	This option is only available with the <a href="#">PeerSync Administrator Enterprise Package</a> . Selecting this option will open the <a href="#">Profile Operations</a> dialog which supports functionalities such as Stopping, Starting, Pausing PeerSync™ services and editing/submitting Profile changes.
Process Failed Events On **	This option is only available with the <a href="#">PeerSync Administrator Enterprise Package</a> . Sends a command to PeerSync™ to re-process any events/files that failed to be processed without restarting PeerSync™.
Process Failed Scans On **	This option is only available with the <a href="#">PeerSync Administrator Enterprise Package</a> . Sends a command to PeerSync™ to re-process any scans that failed to run/complete without restarting PeerSync™.
Set Transmit Frequency	Enabled only if an item is selected on the <a href="#">PeerSync Activity Panel</a> . Frequency represents, in seconds, the interval by which

	<p>PeerSync™ transmits status information to the PSObserver. Selecting this option will open a dialog by which you may specify a desired frequency for a specific PeerSync™ Profile. By default, PeerSync™ sends status information to the PSObserver every 3 seconds. This menu item is not available for PeerSync Profiles that are running TCP Jobs.</p> <p>Note: For accurate status display set the Set Transmit Frequency interval to be smaller than the "<a href="#">Number_of_Cycles_Before_Displaying_Pending_Color</a>" interval used.</p>
--	---

\* Notes:

1. Option available for PeerSync versions 7.3.2 or higher.
2. Some menu items are not available for PeerSync Profiles that are running TCP Jobs.
3. \*\* This option is only available with the [PeerSync Administrator Enterprise Package](#).

## PeerLock Activity Panel

### Locked List

PeerLock Computer	Current Status	Target File Path	Locked	Duration	Accessed By	Target Access
SERVER4	Locked	\\server1\Projects\Shared\Work2.xlsx	9/21/2009 12:38:32 PM	00:06:07	MONIKAD	Read
SERVER4	Locked	\\server1\Projects\Shared\Work1.xlsx	9/21/2009 12:38:32 PM	00:06:07	MONIKAD	Read
SERVER4	Locked	\\server1\Projects\Shared\Doc2.docx	9/21/2009 12:38:32 PM	00:06:07	MONIKAD	Read
SERVER4	Locked	\\server1\Projects\Shared\Doc1.docx	9/21/2009 12:38:32 PM	00:06:07	MONIKAD	Read
SERVER4	Locked	\\server1\Projects\Shared\Doc3.docx	9/21/2009 12:38:32 PM	00:06:07	MONIKAD	Read
SERVER4	Locked	\\server1\Projects\Shared\Work3.xlsx	9/21/2009 12:38:35 PM	00:06:04	MONIKAD	Read

Locked List Columns	
This panel contains all information captured about the source and target files that have been locked by PeerLock™ instances running on the network.	
#Locks	Displays the number of locks on the source.
Accessed By	The name of the user who has opened the file or accessed the resource.
Application	Displays the application that has been detected as opening the source file.
PeerLock Computer	The name of the computer on which PeerLock™ is running and locking corresponding target files.
Current Status	This column represents status of the specific locked file entry. In the <a href="#">Locked List</a> , this would represent 'Locked' while in the <a href="#">Released List</a> the status would be 'Released' followed by the time and reason the release occurred.
Detection Type	This column represents the PeerLock™ detection mode used

	to detect what source files are locked/opened. This will either be File Server Mode Detection or Local Detection.
Duration	Displays the amount of time that the source file has been opened.
Idle Time	Shows the amount of time the target file will remain locked once the source file has been released. When the source file is closed, PeerLock™ will wait the number of Idle Time seconds specified before releasing the target file. During the Idle Time period the file entry in the Locked list will be highlighted Yellow. The Idle Time value can be set in the Release Options dialog. This feature is intended to protect the releasing of files during file opens and saves. Certain applications may temporary release files during these procedures. With this feature enabled, PeerLock™ will wait the set period of time to make sure the file is fully released before unlocking the corresponding target files.
Lock File Handle	Displays the handle value created that is being used to lock the temporary Lock File created by PeerLock™ to Interact with other <%COMPANY% Products. If the Interact features are disabled, then this will display 'None'.
Locked	Display the date/time when the target file was locked.
Release Detected	Shows the date and time when PeerLock™ detected the source file was closed. This value will be cleared if the file is reopened within the Idle period and the target file handle is not released.
Send Freq	Frequency represents, in seconds, the interval by which PeerLock™ transmits status information to the PSObserver. Selecting this option will open a dialog by which you may specify a desired frequency for a specific PeerLock™.
Source Access Allowed	Displays the permissions that are allowed on the opened source file.
Source Attributes	Shows the attributes of the source file.
Source File Path	Displays the file name complete with folder path for the source file that has been detected as an open file.
Source Handle	Displays the handle value created when the source file was opened.
Source Modified	Shows the modified date/time of the source file when it was detected as being open.
Source Open Mode	Displays the permissions that were used to open the source file.
Status Level	Column that represents the status level of each PeerLock™ entry. 0 = Released, 1 = Receiving/Locked, 3 = Pending, 5 = Not Responding (Status Levels -1, 2, and 5 apply to PeerSync™)

	entries only)  PeerLock™ status entries will change if the PSObserver has not received new updates from PeerLock™ for the period set by the <a href="#">Activity Monitoring Options</a> .
Target Access Allowed	Displays the permissions that are allowed on the opened target file which are applied by PeerLock™.
Target File Path	Shows the file name complete with folder path for a target file that is locked, if the file exists and can be locked.
Target Handle	Display the handle value created that is being used to lock the target file by PeerLock™.
Target Open Mode	Displays the permissions that were granted when the target file was locked by PeerLock™.
Temporary Releases	Shows the number of times the source file was closed, but the corresponding target file was not released. This would most likely occur when using the Idle period setting in PeerLock™.
Version	Represents the version of PeerLock™.

## Notes:

1. The PeerLock™ Activity Panel can be shown/ hidden from the [View](#) -> Show PeerLock™ Activity Panel menu item. Either the PeerSync™ or PeerLock™ Activity Panels must be shown. Both Panels may not be disabled at the same time.
2. The columns displayed on this panel can be shown/ hidden by choosing "Select Columns..." from the [Locked List Popup Menu](#).
3. You may resize, sort, and reposition the columns simply by dragging them to a desired position. The size and positions of the columns will be retained in the PSOBSDEF.CFG configuration file.
4. The default columns are Computer, Status, Target File Path, Locked, Duration, Accessed By, Target Access Allowed, Source File Path, Version, and Send Frequency.
5. To refresh all active PeerLock™ entries hit F5 on the keyboard once the [PeerLock Activity Panel](#) is in focus.
6. Unless you manually enables or disables the [PeerLock Activity Panel](#) from the [View](#) menu, the PSObserver will try to determine if PeerLock™ has been installed on the local machine or if is running on the network, to analyze whether it needs to automatically show the [PeerLock Activity Panel](#).

## Released List

PeerLock Computer	Current Status	Target File Path	Released	Duration
DELL690	Released (PeerLock Stopped) - 9/21/2009 12:36:30	\\server1\Proje...	9/21/2009 12:3...	00:02:03
DELL690	Released (PeerLock Stopped) - 9/21/2009 12:36:30	\\server1\Proje...	9/21/2009 12:3...	00:02:03
DELL690	Released (PeerLock Stopped) - 9/21/2009 12:36:30	\\server1\Proje...	9/21/2009 12:3...	00:02:03
DELL690	Released (PeerLock Stopped) - 9/21/2009 12:36:30	\\server1\Proje...	9/21/2009 12:3...	00:01:53
DELL690	Released (PeerLock Stopped) - 9/21/2009 12:36:30	\\server1\Proje...	9/21/2009 12:3...	00:01:45
DELL690	Released (PeerLock Stopped) - 9/21/2009 12:36:30	\\server1\Proje...	9/21/2009 12:3...	00:01:38
DELL690	Released - 9/21/2009 12:38:32 PM	\\server1\Proje...	9/21/2009 12:3...	Target Folder Disconnected
DELL690	Released - 9/21/2009 10:54:14 PM	\\server1\Proje...	9/21/2009 12:3...	10:15:41
DELL690	Released - 9/21/2009 10:54:25 PM	\\server1\Proje...	9/21/2009 12:3...	10:15:42
DELL690	Released - 9/21/2009 10:54:25 PM	\\server1\Proie...	9/21/2009 12:3...	10:15:42

Released List Columns	
This panel displays a list of the top 100 recently released files by PeerLock™ instances running on the network and all information pertaining to the locking and releasing of those files including why the file was released (i.e. Manually, Locking Stopped, PeerLock™ Stopped or the Source File was released).	
#Locks	Displays the number of locks on the source.
Accessed By	The name of the user who has opened the file or accessed the resource.
Application	Displays the application that has been detected as opening the source file.
PeerLock™ Computer	The name of the computer on which PeerLock™ is running and locking corresponding target files.
Current Status	This column represents status of the specific locked file entry. In the <a href="#">Locked List</a> , this would represent 'Locked' while in the <a href="#">Released List</a> the status would be 'Released' followed by the time and reason the release occurred.
Detection Type	This column represents the PeerLock™ detection mode used to detect what source files are locked/opened. This will either be File Server Mode Detection or Local Detection.
Duration	Displays the amount of time that the source file has been opened.
Idle Time	Shows the amount of time the target file will remain locked once the source file has been released. When the source file is closed, PeerLock™ will wait the number of Idle Time seconds specified before releasing the target file. During the Idle Time period the file entry in the Locked list will be highlighted Yellow. The Idle Time value can be set in the Release Options dialog. This feature is intended to protect the releasing of files during file opens and saves. Certain applications may temporary release files during these procedures. With this feature enabled, PeerLock™ will wait the set period of time to make sure the file is fully released before unlocking the corresponding target files.
Lock File Handle	Displays the handle value created that is being used to lock the temporary Lock File created by PeerLock™ to Interact with other <%COMPANY%™ Products. If the Interact features are disabled then this will display 'None'.
Locked	Display the date/time when the target file was locked.
Release Detected	Shows the date and time when PeerLock™ detected the source file was closed. This value will be cleared if the file is reopened within the Idle period and the target file handle is not released.
Send Freq	Frequency represents, in seconds, the interval by which

	PeerLock™ transmits status information to the PSObserver. Selecting this option will open a dialog by which you may specify a desired frequency for a specific PeerLock™.
Source Access Allowed	Displays the permissions that are allowed on the opened source file.
Source Attributes	Shows the attributes of the source file.
Source File Path	Displays the file name complete with folder path for the source file that has been detected as an open file.
Source Handle	Displays the handle value created when the source file was opened.
Source Modified	Shows the modified date/time of the source file when it was detected as being open.
Source Open Mode	Displays the permissions that were used to open the source file.
Status Level	Column that represents the status level of each PeerLock™ entry. 0 = Released, 1 = Receiving, 3 = Pending, 5 = Not Responding (Status Levels -1, 2, and 5 apply to PeerSync™ entries only).
Target Access Allowed	Displays the permissions that are allowed on the opened target file which are applied by PeerLock™.
Target File Path	Shows the file name complete with folder path for a target file that is locked, if the file exists and can be locked.
Target Handle	Display the handle value created that is being used to lock the target file by PeerLock™.
Target Open Mode	Displays the permissions that were granted when the target file was locked by PeerLock™.
Temporary Releases	Shows the number of times the source file was closed, but the corresponding target file was not released. This would most likely occur when using the Idle period setting in PeerLock™.
Version	Represents the version of PeerLock™.

## Notes:

1. The [PeerLock Activity Panel](#) can be shown/hidden from the [View](#) -> "Show PeerLock Activity Panel" menu item. Either the PeerSync™ or PeerLock Activity Panels must be shown. Both Panels may not be disabled at the same time.
2. The columns displayed on this panel can be shown/hidden by choosing "Select Columns..." from the [Released List Popup Menu](#).
3. You may resize, sort, and reposition the columns simply by dragging them to a desired position. The size and positions of the columns will be retained in the PSOBSDEF.CFG configuration file.
4. The default columns are Computer, Status, Target File Path, Locked, Duration, Accessed By, Target Access Allowed, Source File Path, Version, and Send Frequency.

5. Unless you manually enable or disable the [PeerLock Activity Panel](#) from the [View](#) menu, the PSObserver will try to determine if PeerLock™ has been installed on the local machine or if is running on the network, to analyze whether it needs to automatically show the [PeerLock Activity Panel](#).

## Lock/Released List Popup Menu



Lock/Released List Popup Menu	
Display the Lock/Release List Popup Menu by right-clicking on the <a href="#">Locked</a> or <a href="#">Released</a> panels.	
Select Columns...	Displays a dialog from which you may choose to show/hide specific <a href="#">Locked</a> or <a href="#">Released</a> columns. At a minimum, one column must be shown at all times.
Clear Refresh Item(s) in Table...	Selected F5 Available only if an entry is selected from the <a href="#">Locked</a> or <a href="#">Released</a> panels. This setting refreshes the selected row. If the selected lock becomes released, the entry will be cleared from the <a href="#">Locked</a> list and added to the <a href="#">Released</a> list.
	Clear/Refresh All F6 Refreshes the <a href="#">Locked</a> or <a href="#">Released</a> tables to display new locks and clearing/adding released locks.
Re-Send Connection Request	Broadcasts a message to all PeerLocks™ running within the designated domain to begin transmitting status information to the PSObserver.
Release *	This option is available only when using the <a href="#">PeerSync Administrator Enterprise Package</a> . When selected, the PSObserver will send a command to PeerLock™ to release the lock handle of the selected target file. When using this option the target file will not enter the Idle period before being released. The the target file may be temporarily released. During the next Lock Cycle/Frequency/Interval PeerLock may detect that the source file is opened, and will re-lock the target file. Once an item is released it will be added to the Released Files table.
Release All Locks *	This option is available only when using the <a href="#">PeerSync Administrator Enterprise Package</a> . PeerLock will release the lock handles of all the files currently locked on the target folders. When using this option the target files will not enter the

	<p>Idle period before being released. The the target files may be temporarily released. During the next Lock Cycle/Frequency/Interval PeerLock may detect that the source files are opened, and will re-lock the target files. Once an item is released it will be added to the Released Files table.</p>
Set Transmit Frequency On	<p>Enabled only if an item is selected from the <a href="#">Locked</a> or <a href="#">Released</a> tables. Frequency represents, in seconds, the interval by which PeerLock™ transmits status information to the PSObserver. Selecting this option will open a dialog by which you may specify a desired frequency for the specific PeerLock™ running on the selected computer entry. By default, PeerLock™ sends status information to the PSObserver every 3 seconds.</p> <p>Note: For accurate status display, set the Set Transmit Frequency interval to be smaller then the "<a href="#">Number_of_Cycles_Before_Displaying_Pending_Color</a>" interval used.</p>

\* Note: This option is only available with the [PeerSync Administrator Enterprise Package](#).

## Admin Events Panel

### Admin Events Panel

Date/Time	Computer/Domain	Product	UserName	Send/Receive	Description	Result
9/22/2009 10:03:...	WIN2003D	PeerSync	ADMINISTR...	Receive	Get Remote Profile: \\WIN2003D\C\$....	Failed (Could not copy ...
9/22/2009 10:22:...	WIN2003D	PeerSync	MonikaD	Send	Restart Profile: Get Profile Name	Sent Successfully
9/22/2009 10:22:...	WIN2003D	PeerSync	ADMINISTR...	Receive	Restart Profile: \\WIN2003D\C\$\Pro...	Completed Successfully
9/22/2009 10:22:...	WIN2003D	PeerSync	MonikaD	Send	Restart Profile	Sent Successfully
9/22/2009 10:22:...	WIN2003D	PeerSync	ADMINISTR...	Receive	Restart Profile	Completed Successfully
9/22/2009 11:15:...	WIN2003B	PeerSync	MonikaD	Send	Initializing Communication	Sent Successfully
9/22/2009 11:15:...	WIN2003B	PeerSync	administrator	Receive	Initializing Communication	Completed Successfully
9/22/2009 11:17:...	WIN2003B	PeerSync	MonikaD	Send	Restart Profile: Get Profile Name	Sent Successfully
9/22/2009 11:17:...	WIN2003B	PeerSync	administrator	Receive	Restart Profile: \\WIN2003B\C\$\Pro...	Completed Successfully

### Admin Events Table

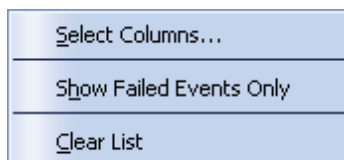
This panel is only available with the [PeerSync Administrator Enterprise Package](#). When enabled via the [View](#) menu it will be displayed at the bottom of the PSObserver interface. By default this table will show all errors that result due to administrative actions such as failing to copy a remote Profile locally for purposes of editing. Right-click on this table and uncheck the [Show Failed Events Only](#) option to display **all** messaging transactions (successful or failed) between PeerSync™, PeerLock™, and the PSObserver.

Date/Time	The following column shows the date and time of the command that was sent or received by the PSObserver. You may drag and drop this column to change its location as well as hide it via the <a href="#">Admin Events Pop-Up Menu</a> .
Computer/Domain	The following column shows the computer and domain for the command that was sent or received by the PSObserver. You may drag and drop this column to change its location as well as hide it via the Admin Events Pop-Up Menu.
Product	The following column shows the Product name (PeerSync or

	PeerLock) for the command that was sent or received by the PSObserver. You may drag and drop this column to change its location as well as hide it via the <a href="#">Admin Events Pop-Up Menu</a> .
UserName	The following column shows the UserName for the command that was sent or received by the PSObserver. You may drag and drop this column to change its location as well as hide it via the <a href="#">Admin Events Pop-Up Menu</a> .
Send/Receive	The following column shows the direction (Send or Receive) for the command that was sent or received by the PSObserver. You may drag and drop this column to change its location as well as hide it via the <a href="#">Admin Events Pop-Up Menu</a> .
Description	<p>The following column shows the Description for the command that was sent or received by the PSObserver. You may drag and drop this column to change its location as well as hide it via the <a href="#">Admin Events Pop-Up Menu</a>.</p> <p>Examples:</p> <ul style="list-style-type: none"> <li>Get Remote Profile: \\Server\Path\To\Profile.snc</li> <li>Restart Profile: \\Server\Path\To\Profile.snc</li> <li>Initializing Communication</li> <li>Reprocess Failed Events</li> <li>Release File: \\Path\To\File.xyz</li> </ul>
Result	<p>The following column shows the Result for the command that was sent or received by the PSObserver. Failed command will appear in red. You may drag and drop this column to change its location as well as hide it via the <a href="#">Admin Events Pop-Up Menu</a>.</p> <p>Examples:</p> <ul style="list-style-type: none"> <li>Completed Successfully</li> <li>Sent Successfully</li> <li>Failed (Could not copy file ...)</li> </ul>

Notes: These options are only available when using the [PeerSync Administrator Enterprise Package](#).

## Admin Events Pop-Up Menu



### Admin Events Pop-Up Menu

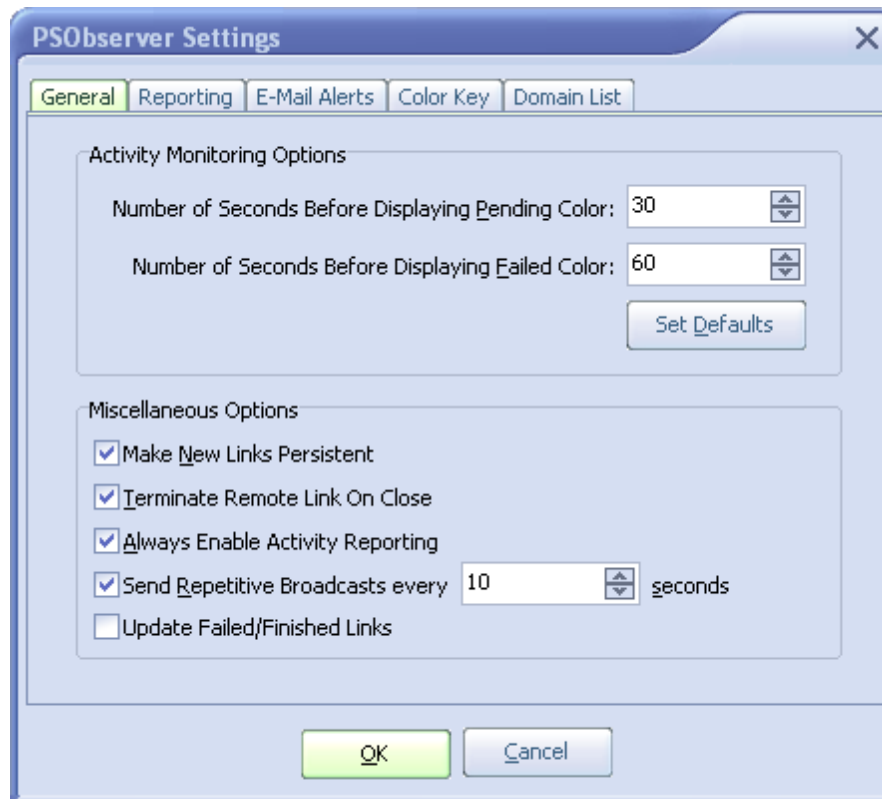
The [Admin Events Panel](#) is only available with the [PeerSync Administrator Enterprise Package](#). When enabled via the [View](#) menu the [Admin Events Panel](#) will be displayed at

the bottom of the PSObserver interface. Right-click on the panel to view the Admin Events Pop-Up Menu.	
Select Columns...	Displays a dialog from which you can choose to show/hide specific <a href="#">Admin Events Panel</a> columns. You can hide/show the entire <a href="#">Admin Events Panel</a> by disabling/enabling the Show Admin Events item within the <a href="#">View</a> menu. At least one column must be shown in the <a href="#">Admin Events Panel</a> .
Show Failed Events Only	This option is enabled by default. Uncheck this option to display all messaging transactions between PeerSync™, PeerLock™, and the PSObserver.
Clear List	Removes/Deletes all entries from the <a href="#">Admin Events Panel</a> .

Notes: These options are only available when using the [PeerSync Administrator Enterprise Package](#).

## Settings Window

### General Tab



Activity Monitor Options	
Number of Seconds Before	Allows you to determine when to display the 'Pending' color (default Yellow) on a PeerSync™ or PeerLock™ activity. A

<p>Displaying Pending Color</p>	<p>Passive connection such as 'Pending' occurs if PeerSync™ or PeerLock™ fail to send status information to the PSObserver within the specified interval (see '<a href="#">Send Freq</a>' column and the /GO command line argument in the PeerSync™ Help Manual). Such connections usually occur during normal sync processes and are not critical (i.e. the processing of large files). This setting allows you to specify the number of seconds before displaying the 'Pending' color. This ensures that a persistent failure has occurred before displaying the 'Failed' color. The minimum value allowed before displaying the 'Pending' color may be set as low as 1 second and as high as 86400 seconds (24 hrs). Default setting is 30 seconds.</p> <p>Notes:</p> <ol style="list-style-type: none"> <li>1. This setting applies to both PeerSync and PeerLock activities.</li> </ol>
<p>Number of Cycles Before Displaying Failed Color</p>	<p>Allows you to determine when to display the 'Failed' color (default Red) on a PeerSync™ or PeerLock™ activity. A Passive connection such as 'Failed' occurs if PeerSync™ or PeerLock™ fail to send status information to the PSObserver within the desired interval (see '<a href="#">Send Freq</a>' column and the /GO command line argument in the PeerSync™ Help Manual). Such connections usually occur during normal sync processes and are not critical (i.e. the processing of large files). This setting allows you to specify the number of cycles before displaying the 'Failed' color. This ensures that a persistent failure has occurred before displaying the 'Failed' color. The minimum value allowed before displaying the 'Failed' color may be set as low as 1 second and as high as 86400 seconds (24 hrs). Default setting is 60 seconds.</p> <p>Notes:</p> <ol style="list-style-type: none"> <li>1. This setting applies to both PeerSync and PeerLock activities.</li> <li>2. This setting needs to be equal to or greater than the "Number of Seconds Before Displaying Pending Color" setting above. If this interval is smaller, it will be automatically set to equal the "Pending" color interval.</li> </ol>
<p>Set Defaults</p>	<p>A courtesy option which resets the <a href="#">Activity Monitor Options</a> to the default settings.</p>

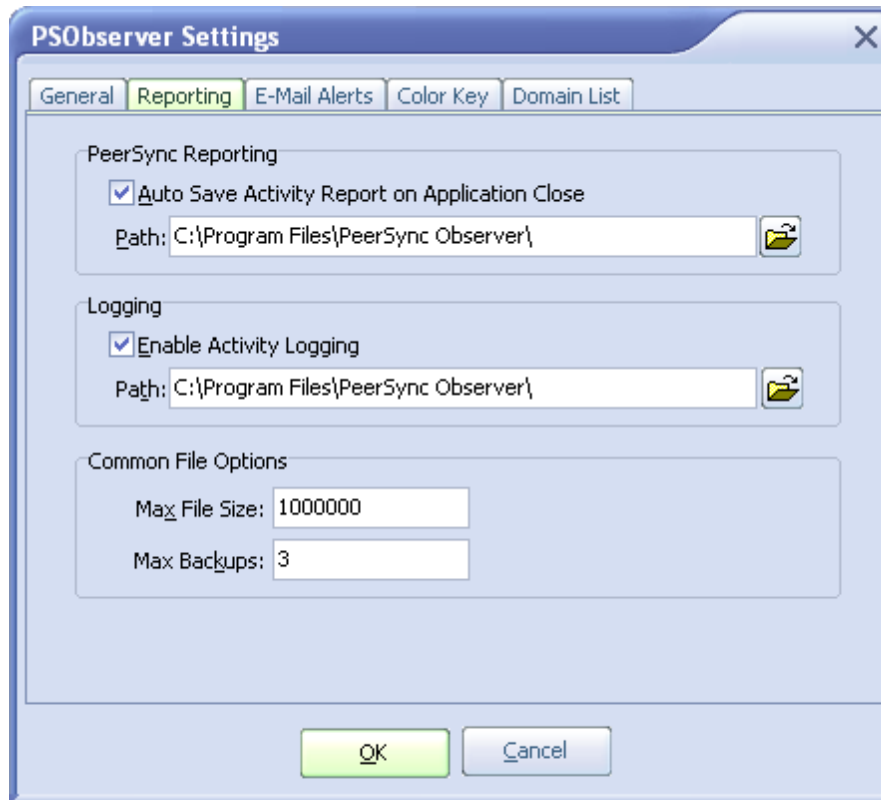
Miscellaneous Options	
<p>Make New Links Persistent *</p>	<p>Enabling this option forces each Profile to send status information to the PSObserver. If PeerSync™ should fail on the remote computer, when it starts up it will automatically start sending status information again.</p>
<p>Terminate Remote Link On Close *</p>	<p>This setting tells each PeerSync™ to stop sending status information to the PSObserver if the PSObserver closes or terminates. This setting is recommended to prevent unnecessary network traffic and does not affect communication</p>

	to other PSObserver running on the network.
Always Enable Activity Reporting *	Checking this option sends a message to all available PeerSync™ hosted computers to enable them to send status information. Selecting <a href="#">Disable Activity Reporting</a> from the <a href="#">PeerSync Activity Pop-Up Menu</a> will disable this setting.
<b>Send Repetitive Broadcasts every x seconds</b>	Specifies the interval used by the PSObserver will broadcast = messages to all available PeerSyncs™ and PeerSyncs™ within the designated domain to begin transmitting status information to the PSObserver. The default value used is 10 seconds.
<b>Update Failed/ Finished Links</b>	When enabled this setting will update Failed or Finished entries in the <a href="#">PeerSync Activity panel</a> . This option will eliminate duplicate entries by always updating existing entries.

## Notes:

- \* This option is available for PeerSync™ versions 7.3.2 or higher.
- The [General](#) window can be accessed from the [Edit](#) -> "Settings" menu.

## Reporting Tab



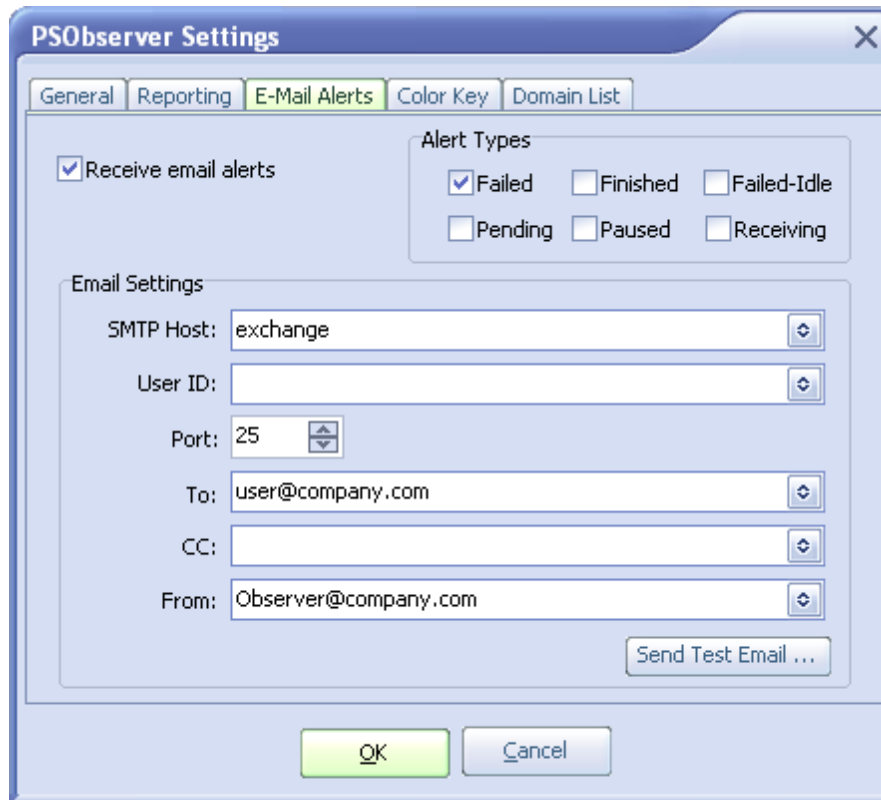
Reporting (These settings apply to items in the <a href="#">PeerSync Activity Panel</a> only.)	
Auto Save Activity Report on Application Close	At the time you exit/close the application, the PSObserver will store out the latest Network Activity information into the current report file. If no report file exists, you will then be prompted to create one. By default this option is enabled.
Path	Gives you the ability to save the report file in an alternate path. By default, the report files are stored in the same directory as the PSObserver application.

Logging (These settings apply for items in both <a href="#">PeerSync</a> and <a href="#">PeerLock</a> Activity Panels)	
Enable Activity Logging	By default this option is enabled. When this setting is enabled the PSObserver will store PeerSync™ and PeerLock™ activities in the PSObserver.LOG file.
Path	Gives you the ability to save the log file in an alternate path. By default, the log files are stored in the same directory as the PSObserver application.

Common File Options	
Max File Size	Specify, in bytes, the maximum size of both the reporting and log files. When this size is exceeded, the file will be renamed to a backup file and a new base file created.
Max Backups	Specify the total number of report and/or log files to be retained.

Note: The [Reporting](#) window can be accessed from the [Edit](#) -> "Settings" menu.

## Email Alerts



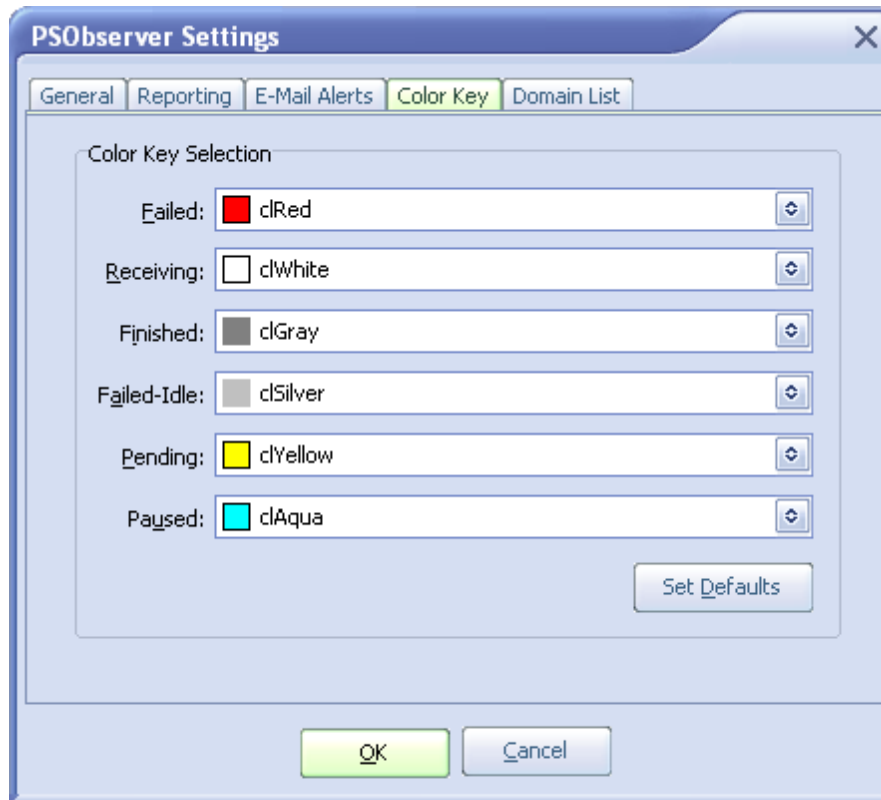
E-Mail Alerts	
Receive email alerts	Check this option to begin receiving email notifications when the status of a PeerSync instance changes. Check the Alert Types for which you wish to be notified via e-mail. When the status of a PeerSync instance changes to the selected type(s) an e-mail notification will be sent.
Alert Types	Select the PeerSync statuses you wish you be notified of via e-mail. When the status of a PeerSync instance changes to the selected type(s) an e-mail notification will be sent. View the <a href="#">Legend</a> section for more information about potential PeerSync statuses (Failed, Finished, Failed-Idle, Pending, Paused, and Receiving).
Email Settings	<b>SMTP Host</b> The host name or IP address of the SMTP mail server to send alert emails to.
	<b>User ID</b> The username to authenticate with the SMTP mail server. This is normally not needed. (Optional)
	<b>Port</b> TCP/IP connection port. It is recommended that you leave the

	default setting unless your email server requires otherwise.
	<b>To</b> The email address of the person who is to receive the email. This user sometimes needs to be a valid user on the SMTP mail server. You may add multiple email addresses in this field. Use a semicolon (;) as a delimiter.
	<b>CC</b> The email address of the person who is to receive a Carbon Copy of the email. You may add multiple email addresses in this field. Use a semicolon (;) as a delimiter.
	<b>From</b> The email address that will appear in the From field of the email. This e-mail does not need to be a valid e-mail. For example it can be used to identify the message as a notification coming from the PSObserver by using an address such as <a href="mailto:Observer@company.com">Observer@company.com</a> .
	<b>Send Test Email...</b> Clicking this button will send a test email to the configured address(es) and let you know if the Observer was able to successfully connect and send an email via the configured SMTP mail server. It is highly recommended that you test the configuration before saving the options.

Notes:

1. These options are only available when using the [PeerSync Administrator Enterprise Package](#).
2. These settings apply to items in the [PeerSync Activity Panel](#) only.
3. The Email Alerts window can be accessed from the [Edit](#) -> "Settings" menu.

## Color Key Tab



### Color Key Selection

This section allows you to set the status color for entries in both [PeerSync™](#) and [PeerLock™](#) Activity Panels. Currently the 'Failed-Idle' and 'Paused' colors do not apply to [PeerLock™](#) entries.

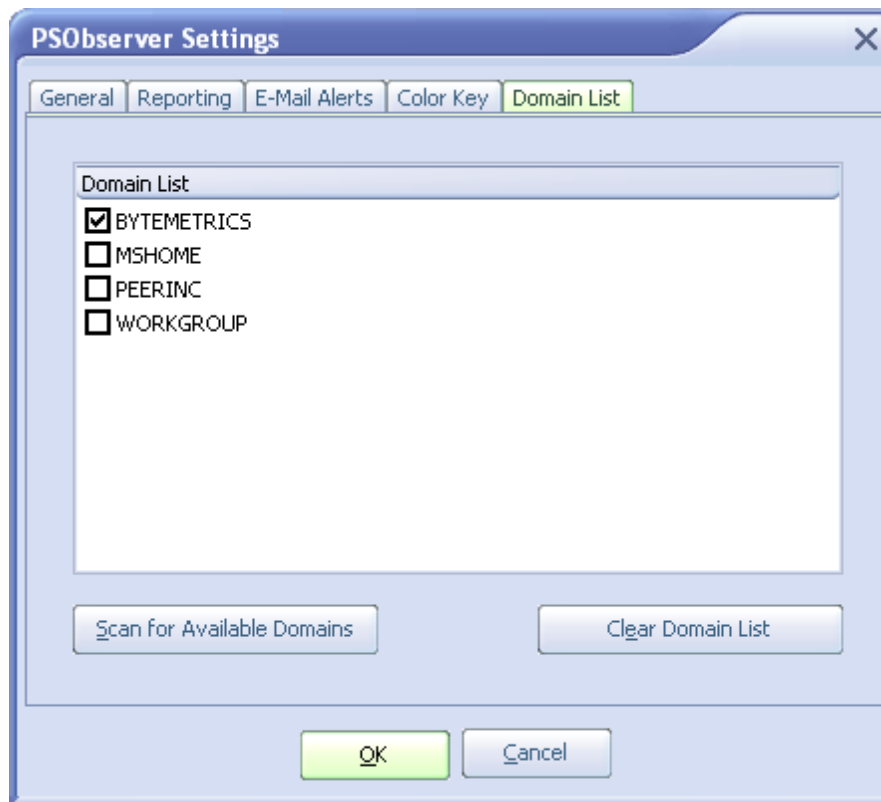
Set Defaults

A courtesy option which resets the Color Key to the default settings.

#### Notes:

1. The [Color Key](#) window can be accessed from the [Edit](#) -> "Settings" menu or by clicking on the [Color Legend Panel](#).
2. The same color can be selected for multiple connections.

## Domain List Tab



Domain List	
Scan for Available Domains	Searches and lists all available/trusted domains visible from this computer. This option appends new findings to the existing list and will not remove any domains that are no longer visible. By default, the PSObserver it will now only scan and enable the current domain for running PeerSync™ and PeerLock™ instances. Other domains found will be listed but not enabled by default.
Clear List	Removes all listed domains.
Add New Item (Pop-Up Menu)	If the PSObserver is having problems receiving status information from PeerSyncs™ and PeerLocks™ running on the domain or across the VPN, select this option to add the name of the machine where PeerSync™ and PeerLock™ reside.
Delete New Item (Pop-Up Menu)	Removes only the domain or computer selected.
Scan Selected Domain for Computers	This setting is only available when right-clicking on a domain listed in the panel. Selecting this option will automatically add all the machines listed/available under the selected Domain. This setting will make it easier to add multiple machines to the list. This option only works if the domain selected can see all

the desired machines where PeerSync™ and PeerLock™ reside.

Notes:

1. The [Domain List](#) window can be accessed from the [Edit](#) -> "Settings" menu.
2. By default the local domain is always included in the search even if it does not appear in this list.

## Profile Operations



Profile Operations	
View or Edit Stored Profile	<p>With this option you may choose to Download and Edit a desired running Profile. You must first select the Profile you wish to edit from a table that lists all the running instances of PeerSync. In this table the Status column will show Stored if a local copy of the Profile exists on the PSObserver system. Otherwise the status will be Unknown.</p> <p><b>Get Profile</b> Click the Get Profile button to download the selected Profile to the local system for editing. This will cause the remote Profile to be transferred to your PSObserver installation directory, into a ProfilesStorage sub folder. The Profile will be stored in a folder named after the remote system from where it was copied (i.e. ..\PeerSync Observer\ProfilesStorage\ComputerName\ProfileName.snc).</p>

	<p><b>Edit Profile</b></p> <p>The Edit Profile button will become available if the selected Profile exists in the ProfilesStorage folder on the local system where the Observer is running. Click this button to launch the <a href="#">Profile Editor</a>. This interface is installed by default unless you choose to opt out. You must register the <a href="#">Profile Editor</a> using your PeerSync license key. The <a href="#">Profile Editor</a> will allow you to make Profile modifications using the options/features that your PeerSync license is authorized to use. The <a href="#">Profile Editor</a> is a light weight version of the PeerSync Profiler designed only for PeerSync Profile modifications - PeerLock™ configuration changes are currently not supported. You may start multiple copies of the <a href="#">Profile Editor</a>. Monitor the <a href="#">Admin Events</a> panel for failure notifications.</p> <p>Once you have made your Profile changes use the Distribute or Restart Stored Profile operation to send your changes to the remote server(s) and restart PeerSync for your changes to take effect.</p> <p>Notes:</p> <ol style="list-style-type: none"> <li>1. By default all ".SNC" Profiles get stored in the following directory: ...  \PeerSync Observer\ProfilesStorage\ComputerName\ProfileName.snc</li> <li>2. The original Profile will be maintained for recovery purposes using the following naming convention: ProfileName.snc_ORIG</li> </ol>
Create Custom Profile	<p>With this option you may choose to Edit or Create a New Profile.</p> <p><b>Create New</b></p> <p>Click this button to launch the <a href="#">Profile Editor</a> and create a brand new Profile. The <a href="#">Profile Editor</a> is installed by default unless you choose to opt out. You must register the <a href="#">Profile Editor</a> using your PeerSync license key. The <a href="#">Profile Editor</a> will allow you to make Profile modifications using the options/features that your PeerSync license is authorized to use. The <a href="#">Profile Editor</a> is a light weight version of the PeerSync Profiler designed only for PeerSync Profile modifications - PeerLock configuration updates are currently not supported. You may start multiple copies of the <a href="#">Profile Editor</a>.</p> <p><b>Edit Profile</b></p> <p>The Edit Profile button will become available if you select a Profile stored on the local system or anywhere else on the network. Click the Edit Profile button to launch the <a href="#">Profile Editor</a>. This interface is installed by default unless you choose to opt out. You must register the <a href="#">Profile Editor</a> using your PeerSync license key. The <a href="#">Profile Editor</a> will allow you to make Profile modifications using the options/features that your PeerSync license is authorized to use. The <a href="#">Profile Editor</a> is a light weight version of the PeerSync Profiler designed only for PeerSync Profile modifications - PeerLock configuration updates are currently not supported. You may start multiple</p>

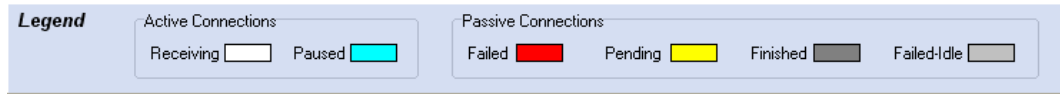
	<p>copies of the <a href="#">Profile Editor</a>. Monitor the <a href="#">Admin Events</a> panel for failure notifications.</p> <p>Once you have created a new Profile or updated an existing one, use the Distribute or Restart Custom Profile operation to send your changes to the remote server(s) and restart PeerSync for your changes to take effect.</p> <p>Notes:</p> <ol style="list-style-type: none"> <li>1. By default all ".SNC" Profiles get stored in the following directory: ...  \PeerSync Observer\ProfilesStorage\ComputerName\ProfileName.snc</li> <li>2. The original Profile will be maintained for recovery purposes using the following naming convention: ProfileName.snc_ORIG</li> </ol>
Distribute or Restart Stored Profile	<p>With this option you may choose to Download, Edit, Distribute, and Restart a desired running Profile. You must first select the Profile you wish to edit from a table that lists all the running instances of PeerSync. In this table the Status column will show Stored if a local copy of the Profile exists on the Observer system. Otherwise the status will be Unknown.</p> <p><b>Get Profile</b>  Click the Get Profile button to download the selected Profile to the local system for editing. This will cause the remote Profile to be transferred to your Observer installation directory, into a ProfilesStorage sub folder. The Profile will be stored in a folder named after the remote system from where it was copied (i.e. ..\PeerSync Observer\ProfilesStorage\ComputerName\ProfileName.snc).</p> <p><b>Edit Profile</b>  The Edit Profile button will become available if the selected Profile exists in the ProfilesStorage folder on the local system where the Observer is running. Click this button to launch the <a href="#">Profile Editor</a>. This interface is installed by default unless you choose to opt out. You must register the <a href="#">Profile Editor</a> using your PeerSync license key. The <a href="#">Profile Editor</a> will allow you to make Profile modifications using the options/features that your PeerSync license is authorized to use. The <a href="#">Profile Editor</a> is a light weight version of the PeerSync Profiler designed only for PeerSync Profile modifications - PeerLock configuration updates are currently not supported. You may start multiple copies of the <a href="#">Profile Editor</a>. Monitor the <a href="#">Admin Events</a> panel for failure notifications.</p> <p><b>Next</b>  Once you have made your Profile changes, select the running Profile instance you wish to update/restart then click the Next button. The dialog will now show all the instances of PeerSync that are currently running with Profiles matching the name of the local Profile you wish to distribute.</p> <p><b>Select All</b></p>

	<p>Click the Select All button to select/check all the Profile instances that have the same name as the local Profile you wish to distribute. Note: Use caution when using this option. The Profiles listed have the same name as the local Profile you wish to distribute, but may have different configuration options.</p> <p><b>Distribute</b> Once you've selected a target PeerSync(s) to update you may click the Distribute button. This option will transfer the desired Profile to the selected target system(s). Monitor the <a href="#">Admin Events</a> panel for failure notifications.</p> <p><b>Distribute/Restart</b> Once you've selected a target PeerSync(s) to update you may click the Distribute/Restart button. This option will transfer the desired Profile to the selected target system(s) followed by a restart of PeerSync in order for the changes to take effect. Monitor the <a href="#">Admin Events</a> panel for failure notifications.</p> <p>Notes:</p> <ol style="list-style-type: none"> <li>1. By default all ".SNC" Profiles get stored in the following directory: ...          \PeerSync Observer\ProfilesStorage\ComputerName\ProfileName.snc</li> <li>2. The original Profile will be maintained for recovery purposes using the following naming convention: ProfileName.snc_ORIG</li> </ol>
Distribute or Restart Custom Profile	<p>With this option you may choose to Distribute, Restart, Edit, or Create a New Profile.</p> <p><b>Create New</b> Click this button to launch the <a href="#">Profile Editor</a> and create a brand new Profile. The <a href="#">Profile Editor</a> is installed by default unless you choose to opt out. You must register the <a href="#">Profile Editor</a> using your PeerSync license key. The <a href="#">Profile Editor</a> will allow you to make Profile modifications using the options/features that your PeerSync license is authorized to used. The <a href="#">Profile Editor</a> is a light weight version of the PeerSync Profiler designed only for PeerSync Profile modifications - PeerLock configuration updates are currently not supported. You may start multiple copies of the <a href="#">Profile Editor</a>.</p> <p><b>Edit Profile</b> The Edit Profile button will become available if you select a Profile stored on the local system or anywhere else on the network. Click the Edit Profile button to launch the <a href="#">Profile Editor</a>. This interface is installed by default unless you choose to opt out. You must register the <a href="#">Profile Editor</a> using your PeerSync license key. The <a href="#">Profile Editor</a> will allow you to make Profile modifications using the options/features that your PeerSync license is authorized to used. The <a href="#">Profile Editor</a> is a light weight version of the PeerSync Profiler designed only for PeerSync Profile modifications - PeerLock configuration updates are currently not supported. You may start multiple</p>

	<p>copies of the <a href="#">Profile Editor</a>. Monitor the <a href="#">Admin Events</a> panel for failure notifications.</p> <p><b>Next</b> Once you have created a new Profile or updated an existing one, click the Next button. The dialog will now show all the instances of PeerSync that are currently running with Profiles matching the name of the local Profile you wish to distribute</p> <p><b>Select All</b> Click the Select All button to select/check all the Profile instances that have the same name as the local Profile you wish to distribute. Note: Use caution when using this option. The Profiles listed have the same name as the local Profile you wish to distribute, but may have different configuration options.</p> <p><b>Distribute</b> Once you've selected a target PeerSync(s) to update you may click the Distribute button. This option will transfer the desired Profile to the selected target system(s). Monitor the <a href="#">Admin Events</a> panel for failure notifications.</p> <p><b>Distribute/Restart</b> Once you've selected a target PeerSync(s) to update you may click the Distribute/Restart button. This option will transfer the desired Profile to the selected target system(s) followed by a restart of PeerSync in order for the changes to take effect. Monitor the <a href="#">Admin Events</a> panel for failure notifications.</p> <p><b>Notes:</b></p> <ol style="list-style-type: none"> <li>1. By default all ".SNC" Profiles get stored in the following directory: ...        \PeerSync Observer\ProfilesStorage\ComputerName\ProfileName.snc</li> <li>2. The original Profile will be maintained for recovery purposes using the following naming convention: ProfileName.snc_ORIG</li> </ol>
Restart Running Profile	<p>Select the PeerSync instances to restart.</p> <p><b>Select All</b> Click the Select All button to select all the running Profile instances to restart PeerSync. This feature will work for all running instances of PeerSync, even if they are not running as a service.</p> <p><b>Restart</b> Once you have selected the running PeerSync instances to restart click the Restart button to issue a restart command. Monitor the <a href="#">Admin Events</a> panel for failure notifications.</p>

Notes: These options are only available when using the [PeerSync Administrator Enterprise Package](#).

## Color Legend Panel

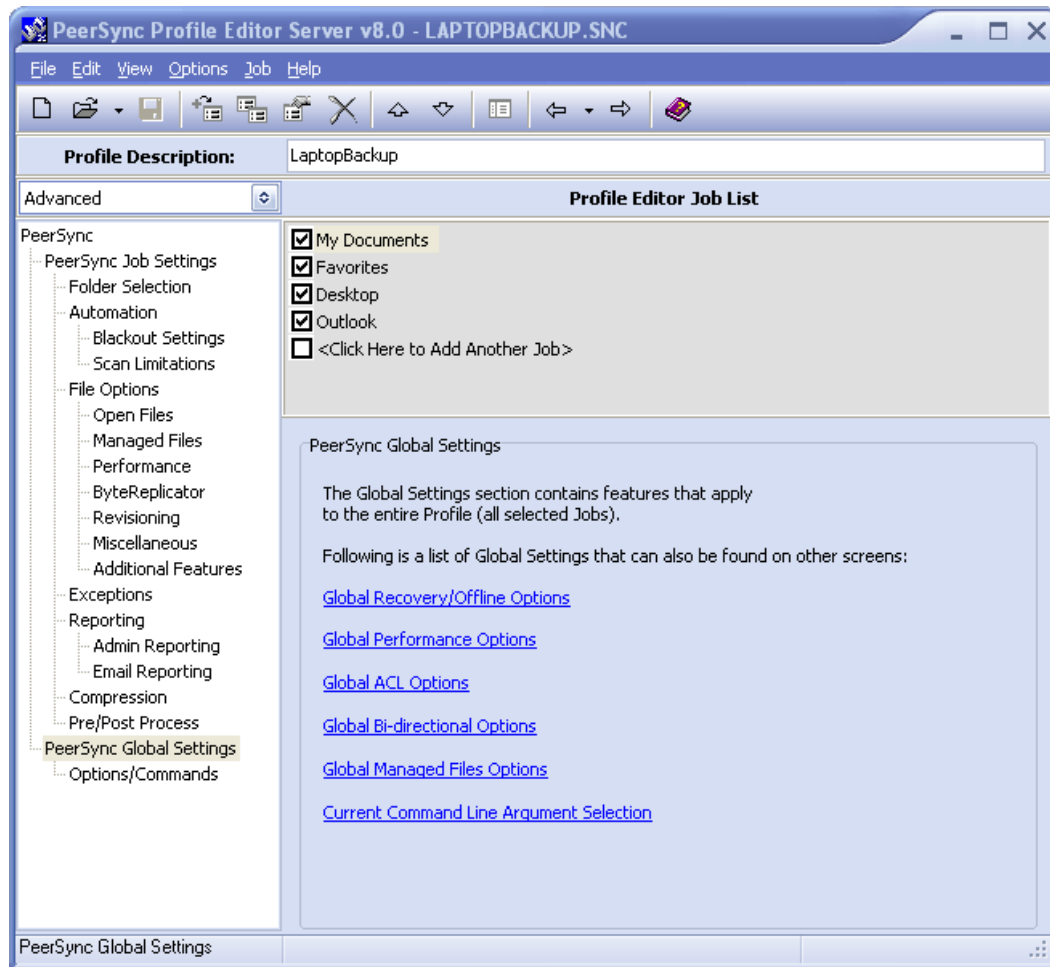


Legend	
<p>The colors shown in this legend are used by the PSObserver to represent the connection status of each row in the PeerSync™ and PeerLock™ Activity Panels. Currently only the Active/Receiving (White), Pending (Yellow), Failed (Red), and Finished (Dark Gray) colors apply to <a href="#">PeerLock</a> entries. Paused and Failed-Idle will only apply to <a href="#">PeerSync</a> items.</p>	
Receiving	Actively receiving incoming status. The value of this status is 1 and can be shown in the <a href="#">Status</a> column of the <a href="#">PeerSync Activity Panel</a> .
Paused	Connection is active but remote application is currently paused. The value of this status is 2 and can be shown in the <a href="#">Status</a> column of the <a href="#">PeerSync Activity Panel</a> .
Failed	Lost connection while remote application was processing data. This suggests that PeerSync™ may have not completed its tasks before terminating. The value of this status is 5 and can be shown in the <a href="#">Status</a> column of the <a href="#">PeerSync Activity Panel</a> .
Pending	Remote application is temporarily not responding. The value of this status is 3 and can be shown in the <a href="#">Status</a> column of the <a href="#">PeerSync Activity Panel</a> .
Finished	Remote application was terminated in a normal manner. The value of this status is 0 and can be shown in the <a href="#">Status</a> column of the <a href="#">PeerSync Activity Panel</a> .
Failed/Idle	Lost connection while remote application was idle. This suggests that PeerSync™ completed its tasks before terminating. The value of this status is 4 and can be shown in the <a href="#">Status</a> column of the <a href="#">PeerSync Activity Panel</a> .

### Notes:

1. By default this panel is shown and can be removed by unchecking the 'Show Color Legend Panel' option from the [View](#) menu.
2. Placing the mouse over a color in the [Color Legend Panel](#) displays a hint which describes the meaning of that color.
3. Clicking on one of the colors on the panel opens the [Settings](#) window where you may change or reset the colors. Alternatively, you may access the [Settings](#) window from the [Edit](#) menu.
4. Each status is represented as an integer (-1 to 5) and can be viewed in the [Status](#) column of the [PeerSync Activity Panel](#) ( 0 = Finished, 1 = Receiving, 2 = Paused, 3 = Pending, 4 = Failed-Idle, 5 = Failed, -1 = Unknown)

## Profile Editor



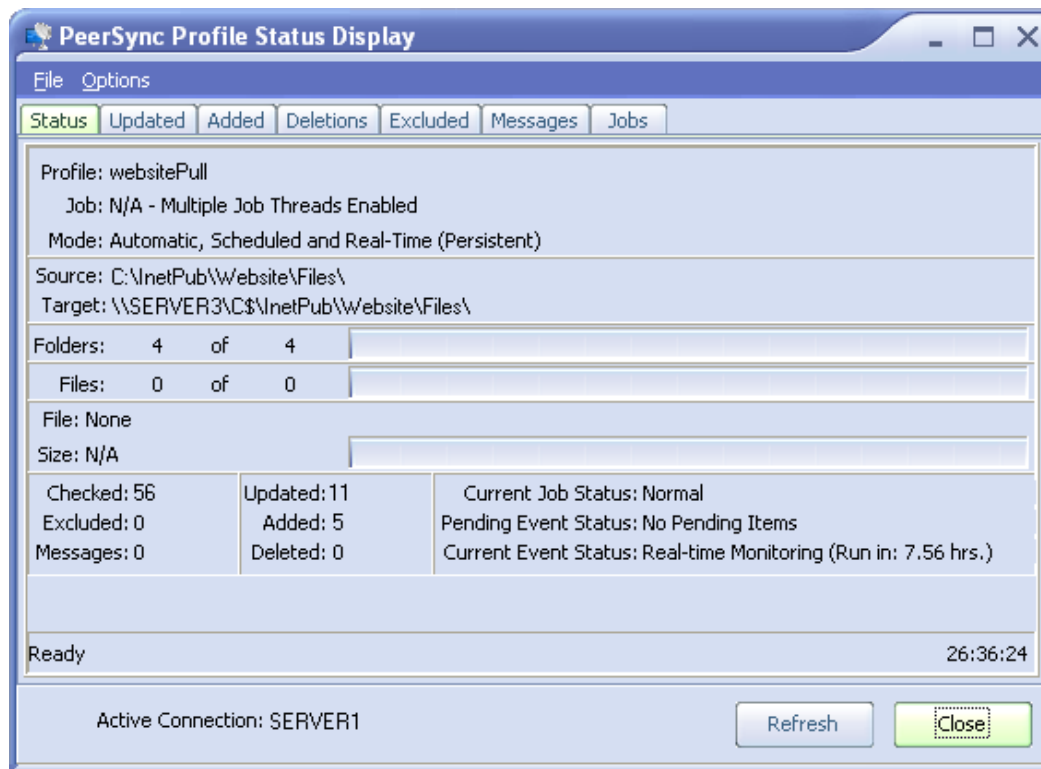
### PeerSync Profile Editor

The Profile Editor is installed by default unless you choose to opt out. It is used to create or edit Profiles and is launched when selecting the Create New or Edit Profile settings from the [Profile Operations](#) window. Before starting the Profile Editor you must register it using your PeerSync license key. The Profile Editor will allow you to make Profile modifications using the options/features that your PeerSync license is authorized to use. The Profile Editor is a light weight version of the PeerSync Profiler designed only for PeerSync Profile creations/modifications - PeerLock configuration updates are currently not supported. You may start multiple copies of the Profile Editor.

For detailed information on all the Profile Editor options please review the [PeerSync Help](#) manual.

Note: Some options described on this page are only available when using the [PeerSync Administrator Enterprise Package](#).

## Status Display



### Status Tab Features

The Status Display window can be accessed by double clicking on one of the items within the [PeerSync Activity Table](#) or by selecting [Connect to Status Display](#) from the [PeerSync Activity Pop-Up Menu](#). The Status Display window is the same display window used in PeerSync™ to view Current Profile Activity within the PeerSync™ application. This window is not accessible when PeerSync™ is running as a Service.

Profile	Displays the name of the Profile actively being processed. This label may not match the name of the Profile currently being configured through the Profiler.
Job	This indicator will dynamically display the name of whichever Job is presently being processed for the Active Profile.
Mode	Displays the Operation Mode (Real-time Mode, Scheduled Operation, etc.) applied to synchronization of the Active Profile.
Source	Displays a file path for the Source Folder presently being synchronized.
Target	Displays a file path for the Target Folder presently being synchronized from the Source indicated above.
Folders	This indicator provides a count of all unsynchronized folders contained within the Source, and will decrease as each folder

	is synchronized. An additional "thermometer" indicator will also track the progress of folder synchronization.
Files	This indicator displays the total number of files contained within the Source while also providing a count of synchronized files. In addition, a "thermometer" indicator will show file synchronization progress by increasing according to the size of the current folder, with 100% representing the cumulative size of files contained within the Source Job set.
File	Indicates the name of the file currently being synchronized.
Large File or Compression Status	This caption will be displayed to the right of the file name that is currently synchronized for large files and during compression. The caption will show the size of the file that has been copied to the Target and/or compression status.
Size	Indicates the size (in bytes) of the file currently being synchronized. A related "thermometer" indicator tracks the progress of synchronization for that file.
Checked	This indicator displays the total number of source files/folders that have been validated for all Profile Jobs.
Excluded	Indicates the number of files that were excluded from synchronization.
Messages	Indicates the number of error messages generated during Profile processing.
Updated	Indicates the number of Target Files that were updated during synchronization of all Profile Jobs.
Added	Indicates the number of new files added to the Target Folders during the synchronization of all Profile Jobs.
Deleted	Indicates the number of files deleted (or moved) during synchronization of all Profile Jobs.
Elapsed Time	Indicates the amount of time that has elapsed during the current Profile activity.
Refresh	Refreshes the Status Display features.
Close	Will close the Status Display, which can be re-accessed via double-clicking on an item within the Activity Table.

Other Tab Features	
Updated	Screen containing statistical information (File Name, Size, Modified Date/Time, Path, Duration, etc.) about the updates that occurred during the current PeerSync™ session.
Added	Screen containing statistical information (File Name, Size, Modified Date/Time, Path, Duration, etc.) about the file adds that occurred during the current PeerSync session.

Deleted	Screen containing statistical information (File Name, Size, Modified Date/Time, Path, Duration, etc.) about the deletions that occurred during the current PeerSync™ session.
Excluded	Screen containing statistical information (File Name, Size, Modified Date/Time, Path, Note, etc.) about the exclusions that occurred during the current PeerSync™ session.
Messages	Screen containing a list of error messages generated during the current PeerSync™ session.
Jobs	Screen containing a list of all the Jobs configured under the current Profile with their respective Source and Target paths.

## License

YOU SHOULD READ CAREFULLY THE FOLLOWING TERMS AND CONDITIONS BEFORE INSTALLING, USING OR DISTRIBUTING THIS SOFTWARE. INSTALLING, USING OR DISTRIBUTING THIS SOFTWARE INDICATES ACCEPTANCE OF THESE TERMS AND CONDITIONS. IN THIS AGREEMENT, "YOU" MEANS YOU AS AN INDIVIDUAL IF YOU ARE USING THIS SOFTWARE FOR PERSONAL USE. IF YOU ARE USING THE SOFTWARE ON EQUIPMENT OWNED OR OPERATED BY A COMPANY OR ORGANIZATION (COLLECTIVELY "COMPANY"), BY ACCEPTING THIS AGREEMENT, YOU REPRESENT THAT YOU ARE DULY AUTHORIZED TO ACCEPT THIS AGREEMENT ON BEHALF OF YOUR COMPANY.

### COPYRIGHT

The software programs (hereafter the "Software") and documentation (hereafter the "Documentation") is copyrighted and remains the property of Peer Software, Inc. All rights are reserved.

### LICENSE

Peer Software, Inc. hereby grants you (hereafter the "User") a limited, non-exclusive, non-transferable license to install and use the Software and accompanying Documentation contained in the trialware distribution package (hereafter called the "Trialware Package") you received (THE "Original Distribution") for your internal business purposes only. The Trialware Package consists of copies of the Software and Documentation received via an electronic transfer mechanism or an electronic storage medium including, but not limited to, diskette, hard disk, removable disk, tape or optical devices such as CD-ROM or WORM. This license to install and use the Software and Documentation is conditioned upon User's compliance with the terms of this Agreement.

You may install and use the Trialware Package on one or more computers provided there is no chance that it will be used simultaneously on more than one computer. If you need to use the Software on more than one computer simultaneously or on a network, please contact Peer Software, Inc. for information about network licenses.

The Software is protected by trade secret and copyright laws and international treaty provisions. You are not obtaining title to the Software or Documentation or any copyright or other intellectual property rights. You further acknowledge that title and full ownership rights to the Software and Documentation will remain the exclusive property of Peer Software, Inc. or

its suppliers, and You will not acquire any ownership rights to the Software. You may not sublicense, lease, rent, sell, convey, translate, modify, decompile, incorporate into another product, convert to another programming language, reverse engineer or disassemble the Software or Documentation for any purpose. You may not modify, or create derivative works based in whole or in part upon, the Software. You agree to not remove, obscure, or alter Peer Software, Inc.'s or any third party's copyright notice, trademarks, or other proprietary rights notices affixed to or contained within or accessed in conjunction with or through the Software and Documentation. Peer Software, Inc. reserves the right to periodically conduct audits upon advance written notice to verify compliance with the terms of this Agreement.

Once a license is purchased from Peer Software, Inc., the Trialware Package will be authorized to function as the full working version of the Software with access to all licensed features.

### NETWORK LICENSE

Multiple users on a network (e.g. a LAN) requiring access to the Software and Documentation must purchase a Network License. Two forms of Network Licenses are offered, a Site License and Enterprise or Concurrent User License. With a Site License, any user who accesses the Software or Documentation requires a user license, regardless of the frequency of use. Once a Site License is purchased Software and Documentation may be copied to all users who have been licensed. Site Licenses are customized for each purchase. The license is based on a quantity of simultaneous users and or CPU installations.

The Concurrent User License allows the licensed number of users to simultaneously access the Software and Documentation. The User agrees to operate metering software, which restricts the simultaneous number of users to the quantity purchased. The Software and Documentation must be installed on network servers under the control of metering software.

Both Site and Concurrent User Licenses allow installation of the Software and Documentation to any number of servers on any number of geographic sites, limited only by the quantity of licenses purchased.

### TERM AND TRIAL PERIOD

You are permitted to use the Trialware Package for a trial period (hereafter the "Trial Period") of thirty (30) days or 30 uses (which ever comes first) after receipt of the Trialware Package. After such time, if you continue to use the Trialware Package, you must register your copy with Peer Software, Inc. Failure to register after the Trial Period constitutes termination of this license. Upon registration, a password (hereafter called the "Password") will be provided to eliminate the registration reminder screen.

This license is effective until terminated. You may terminate it by destroying the Software, Documentation, and all copies thereof. This license will also terminate if you fail to comply with any of the terms or conditions herein. You agree, upon such termination, to destroy all Software, Documentation, and copies thereof. Upon request, You agree to certify in writing that all copies of the Software and Documentation have been destroyed.

### LIMITED WARRANTY

THE SOFTWARE AND DOCUMENTATION IS PROVIDED "AS IS" WITHOUT WARRANTY OF ANY KIND. PEER SOFTWARE, INC. DISCLAIMS ALL WARRANTIES RELATING TO THIS SOFTWARE, WHETHER EXPRESSED OR IMPLIED, INCLUDING BUT NOT

LIMITED TO ANY IMPLIED WARRANTIES OF MERCHANTABILITY, FITNESS FOR A PARTICULAR PURPOSE, AND INFRINGEMENT AND ALL SUCH WARRANTIES ARE EXPRESSLY AND SPECIFICALLY DISCLAIMED.

#### EXCLUSIVE REMEDY

YOUR EXCLUSIVE REMEDY AND PEER SOFTWARE, INC. ENTIRE LIABILITY ARISING FROM OR IN CONNECTIONS WITH THE SOFTWARE, DOCUMENTATION, AND/OR THIS LICENSE (INCLUDING WITHOUT LIMITATION FOR BREACH OF WARRANTY OR INFRINGEMENT) SHALL BE, AT PEER SOFTWARE, INC.'S OPTION, THE REPAIR OR REPLACEMENT OF THE SOFTWARE OR REFUND OF REGISTRATION FEES (IF NOTIFICATION OF PROBLEM IS WITHIN 30 DAYS OF PURCHASE).

#### LIMITATIONS OF LIABILITY

UNDER NO CIRCUMSTANCES OR LEGAL THEORY, WHETHER IN TORT, CONTRACT, OR OTHERWISE, SHALL PEER SOFTWARE, INC. OR ANYONE ELSE WHO HAS BEEN INVOLVED IN THE CREATION, PRODUCTION, OR DELIVERY OF THIS SOFTWARE BE LIABLE TO YOU OR TO ANY OTHER PERSON FOR ANY INDIRECT, SPECIAL, INCIDENTAL, OR CONSEQUENTIAL DAMAGES (EVEN IF PEER SOFTWARE, INC. SHALL HAVE BEEN ADVISED OF THE POSSIBILITY OF SUCH DAMAGES), INCLUDING, WITHOUT LIMITATION, DAMAGES FOR LOSS OF GOODWILL, WORK STOPPAGE, COMPUTER FAILURE OR MALFUNCTION, OR, FOR ANY OTHER DAMAGES OR LOSSES OF ANY NATURE. IN NO EVENT WILL PEER SOFTWARE, INC. BE LIABLE FOR ANY DAMAGES IN EXCESS OF THE LIST PRICE PEER SOFTWARE, INC. CHARGES FOR A LICENSE TO THE SOFTWARE.

Some states do not allow the exclusion of the limit of liability for consequential or incidental damages, so the above limitation may not apply to you.

#### BACK-UP

You may make one copy of the Trialware Package for backup purposes only.

#### DISTRIBUTION

You may distribute the Trialware Package to others via an electronic transfer mechanism or electronic storage media provided that no files are deleted from the Original Distribution Trialware Package or are modified in any way. Files may be added to the Trialware Package expressly for the purpose of identifying the party distributing the Trialware Package. You may also place the Trialware Package into any archive or compressed format for ease of distribution.

You may not distribute the product Registration Key to others under any circumstances.

#### GENERAL

Export of the Software may be subject to compliance with the rules and regulations promulgated from time to time by the Bureau of Export Administration, United States Department of Commerce, which restrict the export and re-export of certain products and technical data. If the export of the Software is controlled under such rules and regulations, then the Software shall not be exported or re-exported, directly or indirectly, (a) without all export or re-export licenses and United States or other governmental approvals required by

any applicable laws, or (b) in violation of any applicable prohibition against the export or re-export of any part of the Software. Some countries have restrictions on the use of encryption within their borders, or the import or export of encryption even if for only temporary personal or business use. You acknowledge that the implementation and enforcement of these laws is not always consistent as to specific countries. Although the following countries are not an exhaustive list there may exist restrictions on the exportation to, or importation of, encryption by: Belgium, China (including Hong Kong), France, India, Indonesia, Israel, Russia, Saudi Arabia, Singapore, and South Korea. You acknowledge it is your ultimate responsibility to comply with any and all government export and other applicable laws and that Peer Software, Inc. has no further responsibility after the initial license to you within the original country of sale.

In addition, neither the Software nor the Documentation and underlying information or technology may be downloaded or otherwise exported or re-exported (i) into (or to a national or resident of) any country to which the United States has embargoed goods; or (ii) to anyone on the United States Treasury Department's list of Specially Designated Nations or the United States Commerce Department's Table of Denial Orders. By using the Software you are agreeing to the foregoing and you are certifying that you are not located in, under the control of, or a national or resident of any such country or on any such list.

This agreement shall be governed by the laws of the state of New York and shall inure to the benefit of Peer Software, Inc. and any successors, administrators, heirs, and assigns. Any action arising under this Agreement shall be filed in any state or federal court located in Suffolk county in the State of New York, and You hereby agree, acknowledge and submit to the exclusive jurisdiction and venue of such courts for the purposes of such action, waive any right You may have to object to such jurisdiction or venue.

This Agreement sets forth all rights for the user of the Software and is the entire agreement between You and Peer Software, Inc. and supersedes any other prior or contemporaneous agreements or communications with respect to the Software and Documentation. This Agreement may not be modified except by a written addendum issued by a duly authorized representative of Peer Software, Inc. No provision hereof shall be deemed waived unless such waiver shall be in writing and signed by Peer Software, Inc. or a duly authorized representative of Peer Software, Inc. If any provision of this Agreement is held invalid, the remainder of this Agreement shall continue in full force and effect. The parties confirm that it is their wish that this Agreement has been written in the English language only.

# Index

## - # -

#Locks 16

## - / -

/GO 1

/GOC 10

## - A -

Accessed By 16

Activity Monitor Options: 24

Number of Cycles Before Displaying Failed Color 24

Number of Cycles Before Displaying Pending Color 24

Time Between Status Checks 24

Activity Table Columns 9

Activity Table:

Activity PopUp Menu 13

Activity Table Columns 9

Admin Events Pop-Up Menu: 23

Clear List 23

Show Failed Events Only 23

Admin Events Table 22

Always Enable Activity Reporting 25

Append - Reporting 6

Application 16

Auto Save Activity Report on Application Cloe 27

## - C -

Clear List 23

Clear Refresh Item(s) in Table 21

Clear/Refresh Entries In Table 13

Closed by Operator or System Shutdown 10

Closed Normally 10

Color Key Settings Tab 30

Color Legend Panel 37

Common File Option Settings: 27

Max Backups 26, 27

Max File Size 26, 27

Computer 16

Connect to Status Display 13, 14

Create/Overwrite - Reporting 6

Current Status 16

## - D -

Daily Timer w/RT 10

Delete - Logging 7

Delete - Reporting 6

Detection Type 16

Disable Activity Reporting 13

Disabled/Unknown = -1 12

Domain List Settings Tab:

Scan for Available Domains 31

DomainList Section 1

Duration 16

## - E -

Enable Activity Logging 27

Enable Activity Reporting 13

Enable Logging 7

## - F -

Failed 37

Failed = 5 12

Failed Events (Process) 15

Failed Scans (Process) 15

Failed-Idle 37

Failed-Idle = 4 12

Finished 10, 37

Finished = 0 12

## - G -

General Settings Tab: 24

Activity Monitor Options 24

Always Enable Activity Reporting 24

Make new Links Persistent 24

Miscellaneous Options 24

Number of Cycles Before Displaying Failed Color 24

Number of Cycles Before Displaying Pending Color 24

Send Repetitive Broadcasts 24

General Settings Tab: 24  
 Terminate Remote Link On Close 24  
 Getting Started 1  
 GO 1

## - I -

Idle Time 16  
 Installation 1  
 Introduction 1

## - J -

Job/Copy Threads 10

## - L -

License 41  
 Limitations 1  
 Load Time 9  
 Lock File Handle 16  
 Lock/Released List Popup Menu: 21  
 Clear Refresh Item(s) in Table 21  
 Re-Send Connection Request 21  
 Select Columns... 21  
 Set Transmit Frequency On 21  
 Locked 16  
 Locked List: 16  
 #Locks 16  
 Accessed By 16  
 Application 16  
 Computer 16  
 Current Status 16  
 Detection Type 16  
 Duration 16  
 Idle Time 16  
 Lock File Handle 16  
 Locked 16  
 Released Detected 16  
 Send Freq 16  
 Source Access Allowed 16  
 Source Attributes 16  
 Source File Path 16  
 Source Handle 16  
 Source Modified 16  
 Source Open Mode 16  
 Status Level 16

Target Access Allowed 16  
 Target File Path 16  
 Target Handle 16  
 Target Open Mode 16  
 Temporary Releases 16  
 Version 16  
 Logging (View Menu) 7  
 Logging (View Menu):  
 Delete 7  
 Enable Logging 7  
 View 7  
 Logging Settings: 27  
 Enable Activity Logging 26, 27  
 Path 27

## - M -

Mail Slots 1  
 Make new Links Persistent 25  
 Max Backups 27  
 Max File Size 27  
 Microsoft mail slots 1  
 Misc Options: 25  
 Always Enable Activity Reporting 25  
 Make new Links Persistent 25  
 Send Repetitive Broadcasts 25  
 Terminate Remote Link On Close 25  
 Miscellaneous Options:  
 Always Enable Activity Reporting 24  
 Make new Links Persistent 24  
 Send Repetitive Broadcasts 24  
 Terminate Remote Link On Close 24  
 Update Failed/Finished Links 24  
 Monitoring (Persistent) 10

## - N -

Not Connected 10  
 NP (Non Persistent) 10  
 Number of Cycles Before Displaying Failed Color 24  
 Number of Cycles Before Displaying Pending Color 24

## - P -

Path (Logging) 27  
 Path (Reporting) 27

Pause PeerSync On 15  
 Paused 37  
 Paused = 2 12  
 PeerLock Locked List: 16  
   #Locks 16  
   Accessed By 16  
   Application 16  
   Computer 16  
   Current Status 16  
   Detection Type 16  
   Duration 16  
   Idle Time 16  
   Lock File Handle 16  
   Locked 16  
   Released Detected 16  
   Send Freq 16  
   Source Access Allowed 16  
   Source Attributes 16  
   Source File Path 16  
   Source Handle 16  
   Source Modified 16  
   Source Open Mode 16  
   Status Level 16  
   Target Access Allowed 16  
   Target File Path 16  
   Target Handle 16  
   Target Open Mode 16  
   Temporary Releases 16  
   Version 16  
 PeerLock Released List:  
   #Locks 18  
   Accessed By 18  
   Application 18  
   Computer 18  
   Current Status 18  
   Detection Type 18  
   Duration 18  
   Idle Time 18  
   Lock File Handle 18  
   Locked 18  
   Released Detected 18  
   Send Freq 18  
   Source Access Allowed 18  
   Source Attributes 18  
   Source File Path 18  
   Source Handle 18  
   Source Modified 18  
   Source Open Mode 18  
   Status Level 18  
   Target Access Allowed 18  
   Target File Path 18  
   Target Handle 18  
   Target Open Mode 18  
   Temporary Releases 18  
   Version 18  
 PeerLock Released List: 18  
 PeerSync Activity PopUp Menu: 13  
   Clear/Refresh Entries In Table 13  
   Connect to Status Display 13  
   Disable Activity Reporting 13  
   Enable Activity Reporting 13  
   Reprocess Failed Events 13  
   Reprocess Failed Scans 13  
   Re-Send Connection Request 13  
   Select Columns... 13  
   Set Transmit Frequency 13  
 PeerSync Activity Table:  
   PeerSync Activity PopUp Menu 13  
 PeerSync Columns:  
   Activity 10  
   Added 10  
   Checked 10  
   Computer 10  
   Current Status 10  
   Cycle 11  
   Deleted 11  
   Detected Events 12  
   Domain 11  
   Failed Files 12  
   Failed Scans 12  
   Group 10  
   Job Count 12  
   Messages 11  
   Pending Events 12  
   Pending Managed Files 12  
   Pending Retries 12  
   Pending Scans 12  
   Profile Date Modified 12  
   Send Freq 11  
   Status Level 12  
   Time 11  
   Total bytes Copied 11  
   Updated 10  
   User 11  
   Version 11  
 Pending 37

Pending = 3 12  
 Prerequisites 1  
 Process Failed Events 15  
 Process Failed Scans 15  
 Processing Selected Jobs 10  
 Profile Editor 38  
 Profile Operations 15  
 PSOBSDEF.CFG 1

## - R -

Released List: 18  
 #Locks 18  
 Accessed By 18  
 Application 18  
 Computer 18  
 Current Status 18  
 Detection Type 18  
 Duration 18  
 Idle Time 18  
 Lock File Handle 18  
 Locked 18  
 Released Detected 18  
 Send Freq 18  
 Source Access Allowed 18  
 Source Attributes 18  
 Source File Path 18  
 Source Handle 18  
 Source Modified 18  
 Source Open Mode 18  
 Status Level 18  
 Target Access Allowed 18  
 Target File Path 18  
 Target Handle 18  
 Target Open Mode 18  
 Temporary Releases 18  
 Version 18  
 Receiving 37  
 Receiving = 1 12  
 Registration 1  
 Release Selected Lock 21  
 Release All Locks 21  
 Released Detected 16  
 Reporting (View Menu): 6  
 Append 6  
 Create/Overwrite 6  
 Delete 6  
 Save 6

Save Content on Close 6  
 View 6  
 Reporting Settings Tab: 26  
 Auto Save Activity Report on Application Close 26  
 Common File Option Settings 26  
 Enable Activity Logging 26  
 Logging Settings 26  
 Max Backups 26  
 Max File Size 26  
 Reporting Settings 26  
 Reporting Settings: 27  
 Auto Save Activity Report on Application Close 26, 27  
 Path 27  
 Reprocess Failed Events 13  
 Reprocess Failed Scans 13  
 Re-Send Connection Request 13, 21  
 Resume PeerSync On 15  
 Running 10

## - S -

Save - Reporting 6  
 Save Content on Close - Reporting 6  
 Scan for Available Domains 31  
 Select Columns... 13, 21  
 Select Computer to Start PeerSync Service 15  
 Send Freq 16  
 Send Repetitive Broadcasts 25  
 Service Operations: 15  
 Pause PeerSync On 15  
 Resume PeerSync On 15  
 Select Computer to Start PeerSync Service 15  
 Start PeerSync On 15  
 Stop PeerSync On 15  
 Set Transmit Frequency 13  
 Set Transmit Frequency On 21  
 Show Failed Events Only 23  
 Source Access Allowed 16  
 Source Attributes 16  
 Source File Path 16  
 Source Handle 16  
 Source Modified 16  
 Source Open Mode 16  
 Start PeerSync On 15  
 Status Display 39  
 Status Level 16

---

Stop PeerSync On 15  
Support 1  
SVC (Service) 10

## - T -

Target Access Allowed 16  
Target File Path 16  
Target Handle 16  
Target Open Mode 16  
Temporary Releases 16  
Terminate Remote Link On Close 25  
Terms and Conditions 1  
Time Between Status Checks 24

## - V -

Version 16  
View - Logging 7  
View - Reporting 6